

PHILIPS

ThermoProtect
straightener

StraightCare
Essential

ThermoProtect technology
Keratin-infused plates
6 temperature settings



BHS376/00



Smooth and shiny hair with care and control

Specially designed for easy and fast styling with long Keratin-infused plates and 6 temperature settings. Care for your hair with ThermoProtect technology preventing overheating.

Beautifully styled hair

- Temperature range from 160°C up to 230°C

Care for your hair

- ThermoProtect technology
- Keratin ceramic plates for smooth gliding and shiny hair

Ease of use

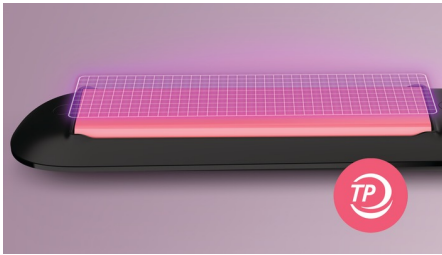
- 6 temperature settings for better control
- 100mm long plates for fast and easy straightening
- Fast heat-up time, ready to use in 30 sec
- Auto shut-off for safe usage
- Key-lock function for safe and easy storage
- Universal voltage for worldwide use



asimpleswitch.com

Highlights

ThermoProtect technology



ThermoProtect technology distributes heat evenly across the plates, preventing overheating to protect your hair.

100mm long plates



The longer 100mm plates enable better contact with the hair to help you achieve perfect straightening results easier and in less time.

Universal voltage



Compatible with 110–240 volts. Can be used wherever you travel in the world.

Keratin ceramic plates



Keratin-infused ceramic plates glide smoothly through your hair, for quick and easy styling.

Fast heat-up time



The straightener has a fast heat-up time, being ready to use in 30 seconds.

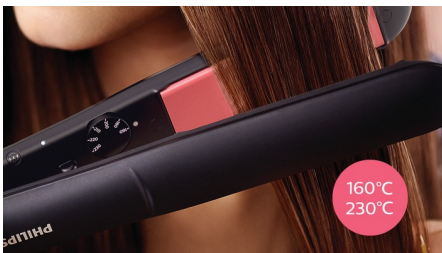


[asimpleswitch.com](https://www.asimpleswitch.com)

Philips Green Logo

Philips Green Products can reduce costs, energy consumption and CO2 emissions. How? They offer a significant environmental improvement in one or more of the Philips Green Focal Areas – Energy efficiency, Packaging, Hazardous substances, Weight, Recycling and disposal and Lifetime reliability.

Temperature range



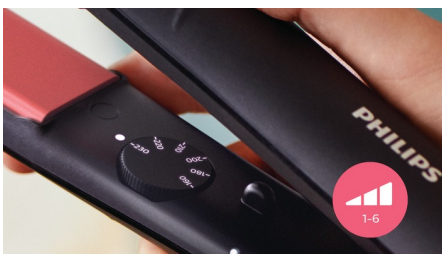
Choose between temperature range from 160°C up to 230°C to secure long-lasting result while minimizing risk of hair damage.

Auto shut-off



The styler has an automatic shut-off function for safe usage. It automatically switches off after 60 minutes.

6 temperature settings



Variable temperature settings for better control. Lower temperatures for last minute touch ups and gentle styling. Higher temperatures for long lasting results.

Key-lock function



The plates can be locked together for safe and easy storage.

Specifications

Technical specifications

Styling temperature: 160°C - 230°C

Type of temperature control: Turning rheostat

Voltage: 110-240 V

Long plates: 28X100mm

Heat-up time: 30 sec

Cord length: 1.8 m

Features

Material plates: Keratin-infused ceramic plates

Storage hook

Swivel cord

Plate lock

Ready to use light

Service

2-year worldwide guarantee

