

Philips  
LCD monitor

### V Line

27" (68.6 cm)  
1920 x 1080 (Full HD)

271V8LA



## Vivid, crisp images beyond boundaries

Philips V line wide-view monitor gives viewing beyond boundaries, great value with essential features. Adaptive-Sync delivers smooth video display. Features like anti-glare, LowBlue mode, and flicker-free for easy-on-the eyes.

#### **Vivid pictures every time**

- VA display delivers awesome images with wide viewing angles
- SmartContrast for rich black details
- SmartImage presets for easy optimized image settings
- Effortlessly smooth action with Adaptive-Sync technology

#### **Easy on the eyes**

- Less eye fatigue with Flicker-free technology
- LowBlue Mode for easy on-the-eyes productivity
- EasyRead mode for a paper-like reading experience

#### **Experience true multimedia**

- HDMI ensures universal digital connectivity
- Built-in stereo speakers for multimedia

#### **Perfectly designed for your space**

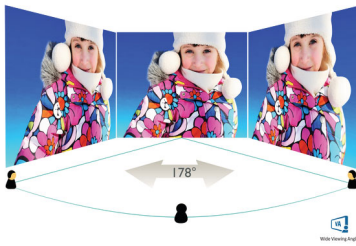
- VESA mount allows for flexibility

# PHILIPS

LCD monitor  
V Line 27" (68.6 cm), 1920 x 1080 (Full HD)

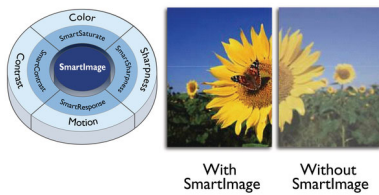
# Highlights

## VA display



Philips VA LED display uses an advanced multi-domain vertical alignment technology which gives you super-high static contrast ratios for extra vivid and bright images. While standard office applications are handled with ease, it is especially suitable for photos, web-browsing, movies, gaming, and demanding graphical applications. It's optimized pixel management technology gives you 178/178 degree extra wide viewing angle, resulting in crisp images.

## SmartImage



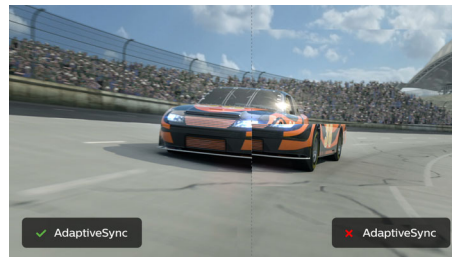
SmartImage is an exclusive leading edge Philips technology that analyzes the content displayed on your screen and gives you optimized display performance. This user friendly interface allows you to select various modes like Office, Photo, Movie, Game, Economy etc., to fit the application in use. Based on the selection, SmartImage dynamically optimizes the contrast, color saturation and sharpness of images and videos for ultimate display performance. The Economy mode option offers you major power savings. All in real time with the press of a single button!

## SmartContrast



SmartContrast is a Philips technology that analyzes the contents you are displaying, automatically adjusting colors and controlling backlight intensity to dynamically enhance contrast for the best digital images and videos or when playing games where dark hues are displayed. When Economy mode is selected, contrast is adjusted and backlighting fine-tuned for just-right display of everyday office applications and lower power consumption.

## Adaptive-Sync technology



Gaming shouldn't be a choice between choppy gameplay or broken frames. Get fluid, artifact-free performance at virtually any framerate with Adaptive-Sync technology, smooth quick refresh and ultra-fast response time.

## Flicker-free technology

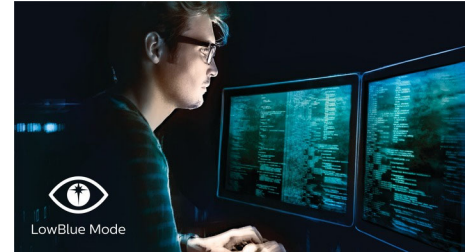


Due to the way brightness is controlled on LED-backlit screens, some users experience flicker on their screen which causes eye fatigue. Philips Flicker-free Technology applies

271V8LA/01

a new solution to regulate brightness and reduce flicker for more comfortable viewing.

## LowBlue Mode



Studies have shown that just as ultra-violet rays can cause eye damage, shortwave length blue light rays from LED displays can cause eye damage and affect vision over time. Developed for wellbeing, Philips LowBlue Mode setting uses a smart software technology to reduce harmful shortwave blue light.

## EasyRead mode



EasyRead mode for a paper-like reading experience

## HDMI Ready



An HDMI-ready device has all the required hardware to accept High-Definition Multimedia Interface (HDMI) input. A HDMI cable enables high-quality digital video and audio all transmitted over a single cable from a PC or any number of AV sources (including set-top boxes, DVD players, A/V receivers and video cameras).



Wide Viewing Angle



SmartContrast



SmartImage



Adaptive-Sync



Flicker-free



LowBlue Mode



EasyRead



HDMI

# Specifications

## Picture/Display

- LCD panel type: VA LCD
- Backlight type: W-LED system
- Panel Size: 27 inch / 68.6 cm
- Display Screen Coating: Anti-Glare, 3H, Haze 25%
- Effective viewing area: 597.9 (H) x 336.3 (V)
- Aspect ratio: 16:9
- Maximum resolution: 1920 x 1080 @ 75 Hz\*
- Pixel Density: 82 PPI
- Response time (typical): 4 ms (GtG)\*
- Brightness: 250 cd/m<sup>2</sup>
- Contrast ratio (typical): 3000:1
- SmartContrast: Mega Infinity DCR
- Pixel pitch: 0.3114 x 0.3114 mm
- Viewing angle: 178° (H) / 178° (V), @ C/R > 10
- Flicker-free
- Display colors: 16.7 M
- Scanning Frequency: 30 - 85 kHz (H) / 48 - 75 Hz (V)
- LowBlue Mode
- EasyRead
- sRGB
- Adaptive sync

## Connectivity

- Signal Input: VGA (Analog), HDMI (digital, HDCP)
- Sync Input: Separate Sync, Sync on Green
- Audio (In/Out): Audio out

## Convenience

- Built-in Speakers: 2 W x 2
- User convenience: Power On/Off, Menu/OK, Volume, Input/Down, SmartImage/Back
- OSD Languages: Brazil Portuguese, Czech, Dutch, English, Finnish, French, German, Greek, Hungarian, Italian, Japanese, Korean, Polish, Portuguese, Russian, Spanish, Simplified Chinese, Swedish, Turkish, Traditional Chinese, Ukrainian
- Other convenience: Kensington lock, VESA mount (100x100mm)
- Plug & Play Compatibility: DDC/CI, Mac OS X, sRGB, Windows 10 / 8.1 / 8 / 7

## Stand

- Tilt: -5/20 degree

## Power

- On mode: 23.3 W (typ.)
- Standby mode: 0.3 W (typ.)
- Off mode: 0.3 W (typ.)
- Energy Label Class: E
- Power LED indicator: Operation - White, Standby mode- White (blinking)
- Power supply: Built-in, 100-240VAC, 50-60Hz

## Dimensions

- Product with stand(max height): 613 x 456 x 231 mm
- Product without stand (mm): 613 x 363 x 45 mm
- Packaging in mm (WxHxD): 730 x 446 x 123 mm

## Weight

- Product with stand (kg): 3.96 kg
- Product without stand (kg): 3.50 kg
- Product with packaging (kg): 5.55 kg

## Operating conditions

- Temperature range (operation): 0°C to 40°C °C
- Temperature range (storage): -20°C to 60°C °C
- Relative humidity: 20%-80 %
- Altitude: Operation: +12,000ft (3,658m), Non-operation: +40,000ft (12,192m)
- MTBF: 50,000 (Excluded backlight) hour(s)

## Sustainability

- Environmental and energy: RoHS, Mercury Free
- Recyclable packaging material: 100 %

## Compliance and standards

- Regulatory Approvals: UKRAINIAN, CB, TUV Ergo, TUV/GS, EAEU RoHS, CU-EAC, CE Mark

## Cabinet

- Color: Black
- Finish: Textured

## What's in the box?

- Monitor with stand
- Cables: HDMI cable, Power cable
- User Documentation



Issue date 2022-05-16

Version: 3.0.1

12 NC: 8670 001 71126  
EAN: 87 12581 77209 3

© 2022 Koninklijke Philips N.V.  
All Rights reserved.

Specifications are subject to change without notice.  
Trademarks are the property of Koninklijke Philips N.V.  
or their respective owners.

[www.philips.com](http://www.philips.com)

\* The maximum resolution works for HDMI input only.  
\* Response time value equal to SmartResponse  
\* The monitor may look different from feature images.