

PHILIPS

EVNIA



Full HD gaming
monitor

Fast IPS Gaming monitor

Evnia 3000

24 (23.8"/60.5 cm diag.)

1920 x 1080 (Full HD)



24M2N3201A

Broaden your gaming horizon

This Fast IPS monitor allows you to game with ultimate precision and speed at 180 Hz. With sharp HDR quality imagery and Full HD resolution guaranteed, this monitor produces an excellent all-round gaming experience.

Features designed for gamers' needs

- SmartImage game mode optimised for gamers
- Built-in stereo speakers for multimedia
- LowBlue mode and Flicker-free easy-on-the eyes viewing
- EasySelect menu toggle key for quick on-screen menu access
- Smart Crosshair: for better aim and more fun
- SmartErgoBase enables user-friendly ergonomic adjustments

Built for fast action

- 180 Hz refresh rates for ultra-smooth, brilliant images
- 0.5 ms ultra-fast speed for crisp images and smooth gameplay
- Fast IPS Panel: For rapid and crystal-clear gaming
- Low input lag reduces time delay between devices to monitor

Immersive visuals

- 16:9 Full HD display for crisp, detailed images
- High Dynamic Range (HDR) for more lifelike colourful visuals

Fast IPS Gaming monitor

Full HD gaming monitor

24M2N3201A/00

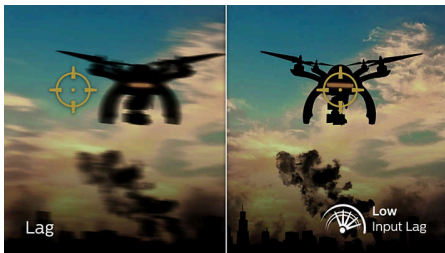
Highlights

180 Hz Gaming



You play intense, competitive gaming. You demand display with lag-free, ultra-smooth images. This display redraws the screen image up to 180 times per second, effectively faster than a standard display. A lower frame rate can make enemies appear to jump from spot to spot on the screen, making them difficult targets to hit. With a 180 Hz frame rate, you get those critical missing images on the screen which show enemy movement in ultra-smooth motion so you can easily target enemies. With ultra-low input lag and no screen tearing, this Philips display is your perfect gaming partner.

Low input lag



Input lag is the amount of time that elapses between performing an action with connected devices and seeing the result on screen. Low input lag reduces the time delay between entering a command from your devices to monitor, greatly improving play on twitch-sensitive video games, particularly important for playing fast-paced, competitive games.

0.5 ms Smart MBR fast response



The Philips Evnia with 0.5 ms Smart MBR effectively eliminates smearing and motion blur, and delivers sharper and more precise visuals to enhance your gaming experience. Fast-moving action and dramatic transitions will be rendered smoothly. It's the best choice for playing thrilling and twitch-sensitive games.

Fast IPS



This feature is made for action-packed gameplay. Not only does it produce virtually blur-free gaming, but it also pairs well with high frame rates for the best and sharpest imagery, guaranteed.

16:9 Full HD display



Picture quality matters. Regular displays deliver quality, but you expect more. This display features enhanced Full HD 1920 x 1080

resolution. With Full HD for crisp detail paired with high brightness, incredible contrast and realistic colours, expect a true-to-life picture.

High Dynamic Range (HDR)



High Dynamic Range delivers a dramatically different visual experience. With astonishing brightness, incomparable contrast and captivating colour, images come to life with much greater brightness while also featuring much deeper, more nuanced darks. It renders a fuller palette of rich new colours never before seen on a display, giving you a visual experience that engages your senses and inspires emotions.

SmartContrast



SmartContrast is a Philips technology that analyses the contents you are displaying, automatically adjusting colours and controlling backlight intensity to dynamically enhance contrast for the best digital images and videos or when playing games where dark hues are displayed. When Economy mode is selected, contrast is adjusted and backlighting fine-tuned for just-right display of everyday office applications and lower power consumption.



Built-in Speaker

Fast IPS Gaming monitor

Full HD gaming monitor

24M2N3201A/00

Highlights

LowBlue mode and Flicker-free



Our LowBlue Mode and Flicker-free technology have been developed to reduce eye strain and fatigue often caused by long hours in front of a monitor.

EasySelect Menu Toggle Key



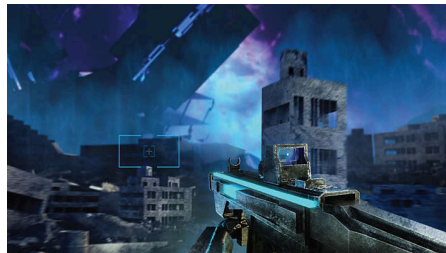
The discreetly placed EasySelect Menu Toggle Key allows you to make quick and easy adjustments to monitor settings in the On-Screen Display menu.

SmartImage Game mode



The new Philips gaming display has quick-access OSD fine-tuned for gamers, offering you multiple options. "FPS" mode (First person shooting) improves dark themes in games, allowing you to see hidden objects in dark areas. "Racing" mode adapts the display with the fastest response time and high colour, along with image adjustments. "RTS" mode (Real-time strategy) has a special SmartFrame mode that enables highlighting of specific area and allows for size and image adjustments. Gamer 1 and Gamer 2 enable you to save personal customised settings based on different games, ensuring best performance.

Smart Crosshair



Colour of Crosshair is set by default. When Smart Crosshair is on, the colour will change as a complementary colour to the background

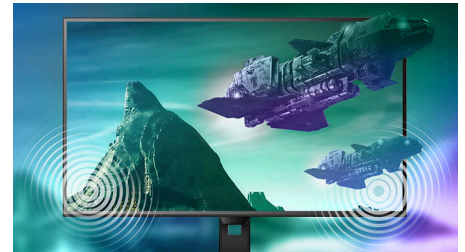
colour. Smart Crosshair enhances the aiming accuracy so you can spot the enemies more easily.

SmartErgoBase



The SmartErgoBase is a monitor base that delivers ergonomic display comfort and provides cable management. The base can swivel, tilt and rotate to various angles to ensure maximum comfort. The height-adjustable stand guarantees the optimal viewing level, reducing the physical strains of a long workday, while cable management reduces cable clutter and keeps the workspace neat and professional.

Built-in stereo speakers



A pair of high-quality stereo speakers built into a display device. They may be visible front firing, or invisible down firing, top firing, rear firing etc. depending on model and design.

Fast IPS Gaming monitor

Full HD gaming monitor

24M2N3201A/00

Specifications

Picture/Display

Panel Size: 23.8 inch/60.5 cm

Aspect ratio: 16:9

LCD panel type: Fast IPS

Backlight type: W-LED system

Pixel pitch: 0.2745 x 0.2745 mm

Brightness: 300 cd/m²

Display colours: 16.7 M

Colour gamut (typical): Adobe RGB 88%, DCI-P3:93%, sRGB: 126%, NTSC 113%*

Contrast ratio (typical): 1000:1

SmartContrast: Mega Infinity DCR

Response time (typical): 1 ms (Grey to Grey)*

Viewing angle: 178° (H)/178° (V), @ C/R > 10

Picture enhancement: SmartImage game

Maximum resolution: 1920 x 1080 @ 180 Hz

(HDMI/DP)

Effective viewing area: 527.04 (H) x 296.46 (V) mm

Scanning Frequency: 30–200 kHz (H)/48–180 Hz (V)

sRGB

Flicker-free

Pixel Density: 92.56 PPI

LowBlue Mode

Display Screen Coating: Anti-Glare, 3H, Haze 25%

Low Input Lag

EasyRead

Adaptive sync

HDR: HDR 10 supported

Smart Crosshair

Smart MBR: 0.5 ms*

Shadow Boost

Connectivity

Signal Input: HDMI 2.0 x 2, DisplayPort 1.4 x 1

Sync Input: Separate Sync

Audio (In/Out): Audio out

HDCP: HDCP 1.4 (HDMI/DP), HDCP 2.2 (HDMI/DP)

Convenience

Built-in Speakers: 2 W x 2

Plug and Play Compatibility: DDC/CI, Mac OS X, sRGB, Windows 11/10

User convenience: Power On/Off, Menu/OK, Input/Up, Game Settings/Down, SmartImage game/Back

OSD Languages: Brazil Portuguese, Czech, Dutch, English, Finnish, French, German, Greek,

Hungarian, Italian, Japanese, Korean, Polish, Portuguese, Russian, Spanish, Simplified Chinese, Swedish, Turkish, Traditional Chinese, Ukrainian
Other convenience: Kensington lock, VESA mount (100 x 100 mm)

Stand

Height adjustment: 130 mm

Pivot: -/+ 90 degree

Swivel: -/+ 30 degree

Tilt: -5/20 degree

Power

Power supply: Internal, 100–240 VAC, 50–60 Hz

Off mode: 0.3 W (typ.)

On mode: 18.7 W (typ.)

Standby mode: 0.5 W (typ.)

Power LED indicator: Operation - White, Standby mode - White (flashing)

Energy Label Class: E

Dimensions

Packaging in mm (W x H x D):

615 x 420 x 139 mm

Product without stand (mm): 540 x 325 x 55 mm

Product with stand (max height):

540 x 515 x 261 mm

Weight

Product with packaging (kg): 6.65 kg

Product with stand (kg): 4.56 kg

Product without stand (kg): 2.76 kg

Operating conditions

Altitude: Operation: +12,000 ft (3658 m), Non-operation: +40,000 ft (12,192 m)

Temperature range (operation): 0°C to 40 °C

MTBF: 50,000 (Excluded backlight) hour(s)

Relative humidity: 20%-80 %

Temperature range (storage): -20°C to 60 °C

Sustainability

Environmental and energy: RoHS

Recyclable packaging material: 100 %

Post-consumer recycled plastics: 35%*

Compliance and standards

Regulatory Approvals: CB, CE Mark,

TUV/ISO9241-307, TUV-BAUART, EAC, EAEU

RoHS, UKCA, EMF, FCC, ICES-003

Cabinet

Colour: White

Finish: Textured

What's in the box?

Cables: HDMI cable, DisplayPort cable, Power cable

Monitor with stand

User Documentation



* For best output performance, please always ensure that your graphic card is capable of achieving the maximum resolution and refresh rate of this Philips display.

* Response time value equal to SmartResponse

* Smart MBR adjusts brightness for blur reduction, so you cannot adjust brightness while Smart MBR is turned on. To reduce motion blur, the LED backlight will strobe synchronously with each screen refresh, which may cause a noticeable change in brightness.

* Smart MBR is a gaming-optimised mode. Turning on Smart MBR may cause noticeable screen flickering. We recommended turning it off when you are not using the gaming function.

* Adobe RGB and DCI-P3 Coverage based on CIE1976, sRGB Area based on CIE1931, NTSC Area based on CIE1976.

* This monitor strives for sustainability: the base cover and headphone holder are made with 35% recycled plastic.

* The products and accessories listed on this leaflet may differ by country and region.

* The monitor may look different from feature images.