

GP6512FF

PN: BTVACFTEBOBFFCN01B
EAN: 6422956011918

Specifications

Battery Model	GP6512FF
Voltage	12V
Power (1,65V/cell@15 min)	202 W/cell
Type	Valve regulated lead-acid (VRLA), 6 cell, absorbent glass mat (AGM) - maintenance free
Designed Floating Life	Up to 5 years (25o C) Eurobat (20o C) : 3-5 years standard commercial
Nominal Operating Temp. Range	25°C ± 3°C
Terminal	T6
Construction	
Container & Cover	ABS
Safety valve	Rubber
Terminal	Copper
Internal Resistance	Full charged at 25°C ≤ 5.8mΩ
Self Discharge (20°C)	3% of capacity declined per month
Capacity affected by temperature	
40°C	102%
25°C	100%
0°C	85%
Charge Voltage (25°C)	
Cycle use	14.4V - 14.7V (-30mV/°C), max. Current: 16.5A
Float use	13.5V - 13.8V (-20mV/°C)
Physical	
Without Terminal	374 x 168 x 168 mm
With Terminal	374 x 168 x 176mm
Product Weight	19.1 Kg



Completely
sealed and
maintenance-free



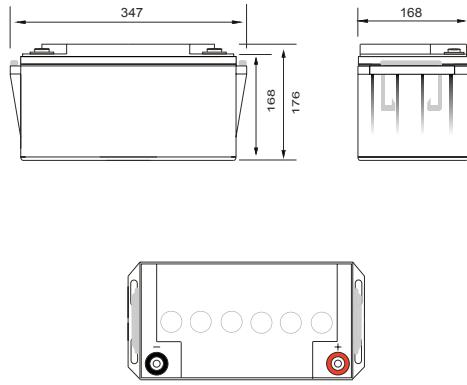
Excellent
charging and
re-charging



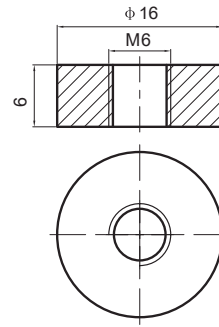
Floating &
standby use:
3-5 years

- Small size battery
- Excellent charging and re-charging
- Stable and reliable for long-term
- Low self-discharge
- Floating & standby use: 3-5 years
- More than 260 cycles at 100% DOD
- Multiple Application: Alarm and Security Systems, Cable Television, Communication Equipment, Power Tools, Control Equipment, Medical Equipment, UPS, Toys

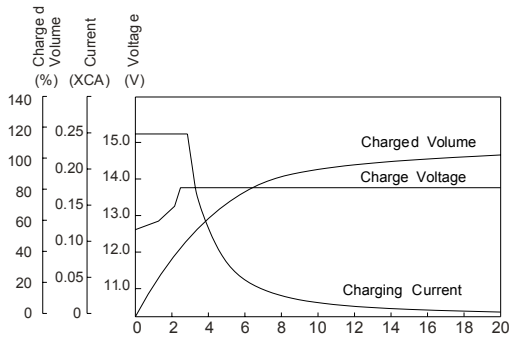
Dimensions (mm)



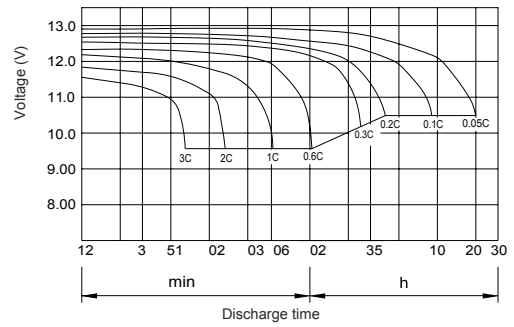
T6 Terminal Dimensions (mm)



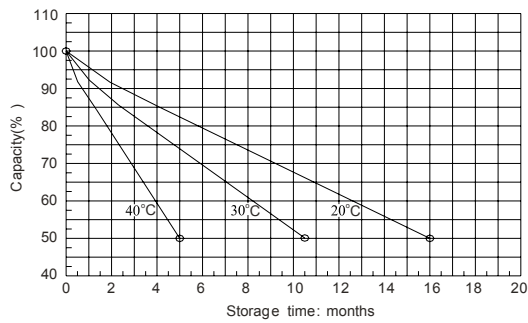
Float Charging Characteristics



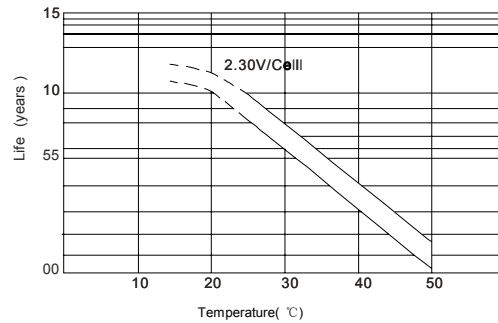
Discharge Characteristics



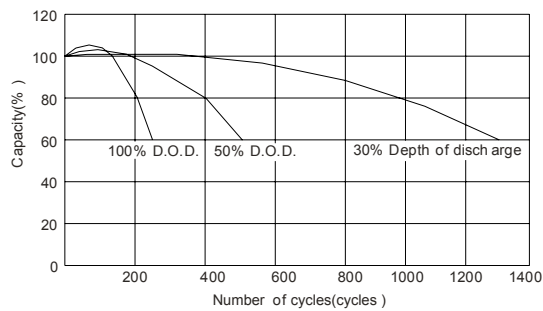
Self Discharge Characteristics



Effect of Temperature on Long Term Float Life



Cycle Life in Relation to Depth of Discharge





Constant Current Discharge Characteristics (A), 25°C

F.V/Ti	15min	30min	1Hr	2Hr	3Hr	5Hr	8Hr	10Hr	20Hr
1.85V/cell	88.9	62.5	35.6	23.6	16.8	11.6	7.9	6.2	3.1
1.80V/cell	93.8	64.2	36.2	23.8	17.0	11.6	8.0	6.3	3.2
1.75V/cell	97.8	65.7	36.5	24.0	17.1	11.7	8.1	6.5	3.3
1.70V/cell	102.1	66.9	37.0	24.1	17.2	11.7	8.1	6.5	3.4
1.65V/cell	104.7	67.5	37.3	24.2	17.2	11.7	8.2	6.6	3.5
1.60V/cell	110.5	69.0	37.6	24.3	17.3	11.8	8.2	6.7	3.7






Constant Wattage Discharge Characteristics (W), 25°C

F.V/Ti	15min	30min	1Hr	2Hr	3Hr	5Hr	8Hr	10Hr	20Hr
1.85V/cell	172.6	124.8	71.6	47.3	33.8	23.3	15.9	12.6	6.3
1.80V/cell	181.8	128.2	72.6	47.8	34.1	23.4	16.1	12.8	6.5
1.75V/cell	189.3	131.1	73.1	48.0	34.3	23.4	16.2	13.0	6.7
1.70V/cell	197.5	133.4	74.0	48.4	34.5	23.5	16.4	13.3	7.0
1.65V/cell	202.3	134.5	74.4	48.5	34.5	23.5	16.4	13.3	7.0
1.60V/cell	213.2	137.4	75.0	48.7	34.7	23.6	16.5	13.4	7.4



Logistics

	Carton Box Size	360 x 174 x 205 mm
	Pieces in the Carton Box	1 pc / ctn
	Net & Gross weight / CTN	N.W. / G.W.: 19.1 kg / 19.4 kg

