

PERFORMANCE

Display Size

23.8"

View Area

526.8x296.4 mm

Panel

In-Plane Switching

Backlight

WLED

Aspect Ratio

16:9

Resolution

2560x1440

Pixel Pitch

0.2058x0.2058 mm

Dot / Pixel Per Inch

123 dpi

View Angle (H / V)

178° / 178°

Response Time

4ms GtG (Extreme mode) / 6ms GtG (Typical mode)

Color Support

16.7 Million

Refresh Rate

48Hz - 120Hz

Brightness

300 cd/m²

Contrast Ratio

1500:1

Color Gamut

99% sRGB, 99% BT.709

Screen Surface Treatment

Anti-glare

Curvature

Flat Panel

Camera

Modular Camera Support

Microphone

None

Speakers

Modular Speaker Support

Power Consumption (Typical / Maximum)

16.5W / 210W

Power Adapter

Integrated

Touchscreen

None

Smart System

None

DESIGN

Stand

Tilt, Swivel, Pivot, Height Adjust Stand

Case Color

Eclipse Black

Side Bezel Width

2 mm

Mounting

Supports VESA mount 100 x 100 mm

ThinkCentre® M Series Support

Tiny Support

Pen

None

Dimensions (WxDxH)^[1]

- Lowest Position | 539.8 x 190.0 x 350.8 mm (21.25 x 7.48 x 13.81 inches)
- Highest Position | 539.8 x 190.0 x 505.8 mm (21.25 x 7.48 x 19.91 inches)
- Head Only | 539.8 x 45.3 x 315.8 mm (21.25 x 1.78 x 12.43 inches)

Packaging Dimensions (WxDxH)

730 x 123 x 420 mm (28.74 x 4.84 x 16.54 inches)

Weight^[2]

- Monitor With Stand | 5.6 kg (12.4 lbs)
- Monitor Head Only | 3.6 kg (8.0 lbs)

Packaging Weight

8.4 kg (18.4 lbs)

CONNECTIVITY

USB Port

x USB-C® (USB 10Gbps, DP 1.4 Alt Mode HBR3, PD3.1 140W, USB upstream), 1x USB-B (USB 5Gbps, USB upstream), 4x USB-A (USB 5Gbps, 1x BC1.2, USB downstream), 1x USB-C® (USB 5Gbps, 15WPD, USB downstream)

Video Connector

1x HDMI® 2.1 TMDS, 1x DP 1.4 (HBR3), 1x DP 1.4 Out, 1x USB-C® (10Gbps, DP 1.4 Alt Mode HBR3)

Network Connectivity

1x RJ45, Ethernet (10M/100M/1000M/2500M)

SERVICE

Base Warranty

3-year

CERTIFICATIONS

Environmental Certification

ENERGY STAR® Certified, TCO 10, TCO Edge 2.1, EU Energy Efficiency Level (Level-D), EPEAT™ Gold

Ergonomic Certification

TÜV Rheinland® Eye Comfort 5 Stars, Eyesafe® Display 2.0, TÜV Low Blue Light (Hardware solution)

Sync Technology

None

Special Features

- HDR10 Compliance
- Factory Calibration: Avg. Delta E<2 at sRGB
- Lenovo® ThinkColour (Lenovo® Accessories and Display Manager) Support
- Lenovo® ThinkColour supports Windows® 10 & 11, Mac OS (functions vary across systems).
- Lenovo® Accessories and Display Manager is formerly Lenovo® Display Control Center.
- KVM Switch (with eKVM)
- LDFM (Lenovo® Display Fleet Manager)
- Mirrored Power Button
- Multi-sync
- Natural Low Blue Light
- Smart Power

SOFTWARE

Operating System

Support Windows® 10, Windows® 11

ACCESSORIES

Video Cables

DP cable, USB-C® to USB-C® Gen 2 cable, USB-B to USB-A Gen 1 cable

MODEL

Announce Date : 2025-06-12 **Region** : EMEA

EAN / UPC / JAN : 0198156544872 / 198156544872 / None

Note:

[1] The system dimensions may vary depending on configurations.

[2] The system weight is approximate and based on results in Lenovo lab, which varies depending on the source of component, variance of the distribution of each component, and manufacturing process. It may not be the exact weight for each specific model.

· Lenovo reserves the right to change specifications without notice.

To see more note information, please access the [web page](#).

Premium Care - Advanced Support from Real People. Real Fast.



REAL PERSON

Choose how you want to reach us - through the phone, chat or email - our expert technicians will take care of you.



REAL FAST

Highly trained technicians will provide you real-time solutions, whatever the issue, on your first contact. If needed, our team will schedule an onsite visit for the next business day.



HASSLE FREE

'Getting started' and 'how-to' assistance for hardware and software. Easy solutions that are simple to reach - that's how Premium Care delivers you the ideal support experience.



PC HEALTH CHECK

Free annual PC Health Check that allows our experts to spot issues before you do so they can resolve them quickly and help you avoid PC problems.

Accidental Damage Protection - Protection of your PC from the unexpected.

Experience shows that a significant portion of devices may be damaged (and not covered under warranty) in the first three years. Lenovo's Accidental Damage Protection service covers accidents beyond the system warranty such as drops, spills, bumps and even electrical surges. Make sure your new device has maximum protection, avoid unplanned costs and get peace of mind.

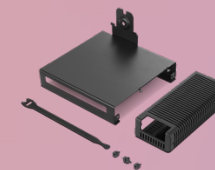
Base Warranty – Included with the systems you purchase, default 1- or 3-year coverage window.

Warranty Extensions & Upgrades – Service and protection that's right for your circumstances.

- Pick Up & Return Courier
- Onsite Support
- Technician Installed Customer
- Replaceable Unit Service
- International Warranty Upgrade

Lenovo may not offer the products, services or features discussed in this document in all regions. Lenovo may withdraw an offering at any time. Consult your local representative for information on offerings available in your area. Lenovo reserves the right to change specifications or other product information without notice. Lenovo is not responsible for photographic or typographical errors. Lenovo provides this publication "as is" without warranty of any kind, either express or implied, including the implied warranties of merchantability or fitness for a particular purpose.

Recommended Accessories



ThinkCentre Tiny Mounting Kit

4XFIR07369

The ThinkCentre Tiny Mounting Kit is a practical and versatile solution specifically designed to house the Tiny PC securely. Its innovative design allows seamless attachment to the bottom of P/T series monitor arms, p...



Lenovo Essential FHD Webcam

4XC1B34802

The Lenovo FHD Webcam is powered by a Full HD 1080P 2 Megapixel CMOS camera that allows your friends, family, and colleagues to see you as clear as day, even when they are worlds away. With full stereo dual-mics that ...

Please click [here](#) to view the full list of accessories.

Lenovo

PSREF
Product Specifications
Reference