

ideapad S530

MORE THAN THE SUM OF ITS PARTS.

Speed, performance, and security. The Lenovo™ **IdeaPad™** S530 gives you all of this and more. Designed for both productivity and downtime, this sleek, light laptop boasts Harman® speakers, Dolby Audio™, and a 13" near-edgeless FHD display. It also has up to an 8-hour battery life that recharges quickly. You can configure it, too—with discrete graphics, secure fingerprint reader, and a backlit keyboard.

WHY YOU SHOULD BUY THE LENOVO IDEAPAD S530



Superb surround sound

The **IdeaPad** S530 comes with premium Harman® speakers optimized with Dolby Audio™ as standard. Delivering a sound that's always crisp and clear, it means that you can enjoy your music, movies, and TV shows to the full wherever you go.

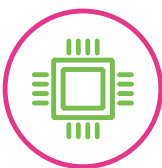


More screen, less bezel

The 13.3" FHD display shows everything in vibrant detail—and from different angles, too. Your viewing experience is enhanced by up to 72% color gamut, and very thin bezels on three sides of the screen (only 6.25 mm, on the left and right; and 8.52 mm, across the top), creating a near edgeless display.



Lenovo™



It's the little things that matter

From the seamless power of up to Intel® Core™ i7 processing to the soft-touch keyboard and touchpad, the **IdeaPad** S530 is engineered to help you achieve more, more quickly. It's also surprisingly light and thin—just 1.25 kg, enabling you to work, rest, or play from anywhere.



Password? It's on the tip of your finger

With the optional fingerprint reader, you can log into your **IdeaPad** S530 safely and quickly with your finger. As well as being faster than typing a password, you can rest easy as all your personal information is wrapped in three layers of encrypted security.



WWW.LENOVO.COM



ideapad S530

SPECIFICATIONS

Lenovo IdeaPad S530-13IWL*

PERFORMANCE

Processor

Intel® 13th: Whiskey lake
8th Generation Intel® Core™ i7 8565U
8th Generation Intel® Core™ i5 8265U
8th Generation Intel® Core™ i3 8145U

Operating System

Windows 10 Home

Graphics

NVIDIA® GeForce® MX 150
Intel® Integrated

Memory

LPDDR3 : 4 GB / 8 GB / 16 GB

Storage

PCIe SSD : 128 GB / 256 GB / 512 GB

Audio

Harman® Speakers with Dolby Audio™

Battery¹

Up to 8 Hours; Rapid Charge²

DESIGN

Display

13.3" FHD (1920 x 1080) IPS
(Optional Glass Display)
6.25 mm l/r bezel; 8.52 mm top bezel

Dimensions (W x D x H)

(mm) : 308.3 x 211 x 14.8
(inches) : 12.14" x 8.31" x 0.58"

Weight

Starting at 2.75 lbs (1.25 kg)

Optional Features

Backlit Keyboard
Fingerprint Reader

Wow Features

Cortana
Glass 'Comfort Touch' Touchpad
Glass Display³

Colors

Onyx Black
Mineral Grey
Liquid Blue
Copper

CONNECTIVITY

WLAN

1 x 1 WiFi 802.11 ac
2 x 2 WiFi 802.11 ac
2 x 2 MU-MIMO

Bluetooth®

Bluetooth® 4.1/5.0

Connectors

2 x USB 3.0
1 x USB Type-C™ (USB 3.1 + DisplayPort™)
HDMI™
Audio Jack

PRELOADED SOFTWARE

- McAfee LiveSafe™⁴
- Lenovo Vantage⁴
- Microsoft Office Centennial⁵
- Microsoft Office JP⁶
- Lenovo PC Manager⁷
- Lenovo Antivirus Plus⁷
- Lenovo App Explorer⁴
- LinkedIn⁸
- Lenovo Utility⁸



¹ All battery life claims are approximate and based on test results using the MobileMark® 2014 ver 1.5 battery life benchmark test. Actual results will vary, and depend on numerous factors including product configuration and usage, software, operating conditions, wireless functionality, power management settings, screen brightness and other factors. The maximum capacity of the battery will naturally decrease with time and usage. See <https://bapccom/products/mobilemark-2014/> for additional details.

² Power-off mode; requires 65W power source.

³ Optional.

⁴ ROW.

⁵ Worldwide (WW) except Japan

⁶ Japan only.

⁷ China only.

⁸ Worldwide (WW).

LENOVO SERVICES

Warranty Upgrades - On-site / In-Home Service

Maximizes PC uptime and productivity by providing convenient, fast repair services in your own home.

Accidental Damage Protection

Avoid the hassles of unexpected repair costs. Provides coverage for non-warranted damage incurred under normal operating conditions, such as minor spills, drops or damage to the integrated screen.

Warranty Extensions

(1-to-3 Years Total Duration)

This fixed-term, fixed-cost service helps accurately budget for PC expenses, protect your valuable investment and potentially lower the cost of ownership over time.

* Example of Lenovo IdeaPad catalogue naming convention



Intel® platform codes

Apollo Lake: IAP, Broadwell: IBD, Braswell: IBR, Broadwell: IBW, Baytrail: IBY, Cannonlake: ICN, Haswell: IHH, Kabylake: IKB, Skylake H: ISH, Skylake: ISK, Skylake U: ISU, Skylake Y: ISY, Skylake Z: ISZ, Gemini Lake: IGM, Whiskey Lake: IWL

OPTIONS & ACCESSORIES



Lenovo 13" Laptop
Leather Sleeve



Lenovo 15.6" Laptop
Urban Backpack



Lenovo 510
Wireless Mouse



WWW.LENOVO.COM

Lenovo reserves the right to alter product offerings and specifications at any time, without notice. Lenovo makes every effort to ensure accuracy of all information but is not liable or responsible for any editorial, photographic or typographic errors. All images are for illustration purposes only. For full Lenovo product, service and warranty specifications visit www.lenovo.com. Lenovo makes no representations or warranties regarding third party products or services. **Trademarks:** The following are trademarks or registered trademarks of Lenovo: Lenovo, the Lenovo logo, IdeaPad, IdeaCentre, Microsoft, Windows and Vista are registered trademarks of Microsoft Corporation. Ultrabook, Celeron, Celeron Inside, Core Inside, Intel, Intel Logo, Intel Atom, Intel Atom Inside, Intel Core, Intel Inside, Intel Inside Logo, Intel vPro, Itanium, Itanium Inside, Pentium, Pentium Inside, vPro Inside, Xeon, Xeon Phi, and Xeon Inside are trademarks of Intel Corporation in the U.S. and/or other countries. Other company, product and service names may be trademarks or service marks of others. Visit www.lenovo.com/lenovo/us/en/safecom/ periodically for the latest information on safe and effective computing. ©2018 Lenovo. All rights reserved.



Lenovo™