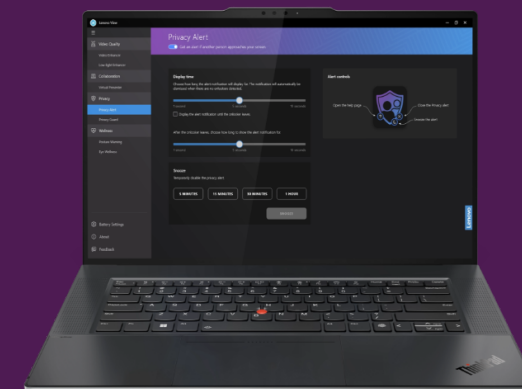


ThinkPad Z16 Gen 2

This ThinkPad is designed to meet the diverse needs of modern-hybrid professionals. Crafted with a sleek aluminum top and bottom, it exudes sophistication and durability at its best. The powerful AMD Ryzen 9 processor seamlessly tackles tasks such as document editing, data analysis and graphic designing. The integrated AMD Radeon 780M graphics and discrete AMD Radeon RX 6550M graphics offer unparalleled visual experience. Running out of power during client meetings or on-location assignments isn't an option anymore. The impressive 72Wh battery supports Rapid Charge and lasts up to 18.4 hours.



Redefining possibilities with powerful performance and groundbreaking on-device AI

The ThinkPad Z Series is an ultraportable workstation; thin and light, yet packed with professional graphics, processing and storage as well as latest collaboration features for financial services specialists.

Immerse yourself in the brilliance of the device's 16" WQUXGA multi-touch display that comes with anti-reflection and anti-smudge surface. The 100% DCI-P4 color gamut and 16:10 aspect ratio bring your content to life whereas the Dolby Atmos stereo speakers and FHD 1080p+IR hybrid camera elevate your digital experience.

Say goodbye to lagging downloads and hello to streamlined productivity. With MediaTek Wi-Fi 6E, you'll experience lightning-fast wireless speeds and seamless internet connectivity. The inclusion of USB-C 3.2 Gen 2 ensures rapid data transfer, while dual USB 4 connectivity ports offer versatility for power delivery and peripheral connections.

The onboard HD Realtek audio chip, 2W dual Dolby Atmos stereo speakers, Dolby Voice dual-array mics and FHD 1080p camera optimizes audio and video conferencing experiences for users.

Lenovo Services

Lenovo delivers tailored sustainability services, devices, and infrastructure solutions from our broad portfolio, working closely with you to support your target outcomes across the IT lifecycle..



On-site Service

- On-site support if needed
- Normally next business day service
- Agreed appointment times

Accessories

Lenovo USB-C Wired In-Ear Headphones

- Hear every detail with the impressive 9mm audio drivers that produce rich, natural tones.
- Designed to be business-ready on any USB-C device, at any time.
- Play and pause media via a single convenient button.



PN: 4XD1J77351

Lenovo 500 USB-C Universal Dock

- 9 powerful expansion ports to maximize productivity.
- Next-gen plug-and-play simplicity and dynamic power delivery.
- Constructed using 40% recycled plastic materials.



PN: G0AA0135xx2

ThinkPad Z16 Gen 2

Performance

Processor

AMD Ryzen 5/7 / 9

Operating System

Windows 11 Pro
Windows 11 Home
Windows 11 Home Single Language
Windows 11 DG Windows 10 Pro 64
Fedora Linux
Linux
Ubuntu Linux

NPU

Integrated AMD Ryzen AI, up to 10 TOPS

Graphics

AMD Radeon 760M (integrated)
AMD Radeon 780M (integrated)
AMD Radeon RX 6550M

Memory

16GB LPDDR5x-6400, soldered
32GB LPDDR5x-6400, soldered
64GB LPDDR5x-6400, soldered

Storage¹

Up to 1x 2TB M.2 2280 PCIe NVMe SSD

¹The storage capacity supported is based on the test results with current Lenovo storage offerings.

Audio

High Definition (HD) Audio
Stereo speakers, 2W x2, Dolby Atmos
Dual-microphone array, 360° far-field, Dolby Voice

Camera^{*}

FHD 1080p + IR hybrid, with E-shutter
FHD 1080p + IR discrete, with E-shutter

Battery^{2 3}

72Wh (up to 18.46 hr) battery, Rapid Charge

²Battery life claims are approximate maximum. Actual result will vary depending on many factors and the maximum battery capacity will decrease with time and use.

³Rapid charge is only guaranteed when the computer is turned off or in standby mode or in hibernation mode.

Power Adapter^{*}

135W USB-C slim adapter, PD 3.0

Design

Display⁴

16" WUXGA (1920x1200) IPS Anti-glare 16:10
- 400nits, 100% sRGB, low power, TÜV Low Blue Light (Hardware Solution)

16" WUXGA (1920x1200) IPS ARAS 16:10
- 400nits, 100% sRGB, on-cell touch, low power, TÜV Low Blue Light (Hardware Solution)

16" WQUXGA (3840x2400) OLED ARAS 16:10
- 400nits, 100% DCI-P3, OGS touch, DisplayHDR 400, Dolby Vision, TÜV Low Blue Light (Hardware Solution)

⁴IPS (in-plane switching) technology may refer to IPS, PLS, ADS, AHVA, AAS.

Pen^{*}

Pen sold separately*

Keyboard

6-row, spill-resistant, backlight

Touchpad

TrackPoint and glass surface Haptic Touchpad
80 x 120 mm (3.15 x 4.72 inches)

Dimensions⁵

354.4 x 237.4 x 15.8 mm (13.95 x 9.35 x 0.62 inches)

⁵The system dimensions may vary depending on configurations.

Weight⁶

Starting at 1.81kg (3.99 lbs)

⁶The system weight is approximate and may vary depending on configurations

Color

Arctic grey (top), black (bottom)

Case material

Aluminium (top), aluminium (bottom)

Connectivity

WLAN + Bluetooth^{* 7 8}

MediaTek Wi-Fi 6E RZ616, 802.11ax, Bluetooth 5.3

⁷Wi-Fi 6E is only enabled on Windows 11 and operates as Wi-Fi 6 with Windows 10.

⁸Bluetooth 5.3 operation requires Windows 11.

Ports

1x USB-C 3.2 Gen 2 (data, PD 3.0, DP 1.4a)
2x USB4 40Gbps (data, PD 3.0, DP 1.4a)
1x SD card reader
1x Headphone / microphone combo jack (3.5mm)

Docking

Docking support via USB-C

Security & Privacy

Security

Discrete TPM 2.0 and Microsoft Pluton TPM 2.0
Kensington Nano Security Slot
Touch style MOC fingerprint reader
E-shutter
IR camera for Windows Hello (facial recognition)
Glance by Mirametrix

Manageability

System Management^{*}

DASH^{*}

Certifications

Green Certifications^{9 10 11}

ENERGY STAR 8.0
EPEAT Gold Registered
ErP Lot 6/26
TCO Certified 9.0
RoHS compliant

⁹The items listed under the "Green Certifications" section may not only refer to certification but also registration or self-declaration.

¹⁰EPEAT registration and ENERGY STAR certification are optional and only available on the models with preloaded OS.

¹¹EPEAT is registered where applicable, please see epeat.net for registration status by country.

Other Certifications

TÜV Rheinland Low Blue Light (Hardware Solution)
MIL-STD-810H