

FS-1120D

MONOCHROME DESKTOP A4 PRINTER

► print ► copy ► scan ► fax

MADE TO BE YOUR DEPENDABLE PARTNER

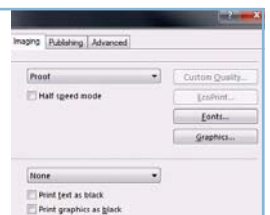
Get the job done, professionally and economically, with the FS-1120D personal compact printer for individual users. To lower your printing costs even further, this device comes with a duplex printing function that can significantly reduce your paper consumption. Robust and reliable, with KYOCERA's long-life technology, it's a quiet printer that you can depend on – even if you can't hear it.

- Up to 30 pages per minute in A4
- Double-sided printing as standard
- Max. paper capacity of up to 550 sheets
- PowerPC 405F5 / 360 MHZ, up to 544 MB RAM
- Compact design, robust and dependable
- Highly reliable thanks to long-life components
- Silent mode regulation
- Low printing costs



Save environmental and financial resources with double-sided printing.

The noise level regulation is your guarantee of a quiet print environment.



FS-1120D

MONOCHROME DESKTOP PRINTER FOR A4 FORMAT



ECOSYS stands for ECOlogy,
ECONomy and SYStem-printing.

With their long-life components, ECOSYS devices are designed to maximise durability and minimise the total cost of ownership with regard to maintenance, administration and consumables. The cartridge-free system means that only the toner has to be replaced regularly. The modular design concept allows you to add workflow-enhancing functions as required. Integrated system software provides long-term cross-network compatibility. KYOCERA's long-life components cost you and the environment less.

PRESCRIBE IIe

With the KYOCERA page design and control language PRESCRIBE IIe, even complex graphics, logos and forms (multipart forms) can be created independently on the system and saved and updated in the printer. Consequently, integration into print files no longer applies. They are only accessed as required and therefore relieve the load on the network.

The KM NetViewer

The KM NetViewer enables complete monitoring and control of all ECOSYS printers and digital KYOCERA multifunction units from any Windows® PC and thus provides ideal network administration. It also supports the standardised SNMP protocol.

Status Monitor and Command Center

The Status Monitor shows the current printers condition and gives direct access to the Command Center for the modification of settings that are not contained in the drivers (e.g. network settings, adjustment of sleep mode or blocking of the control panel).

General

Technology

KYOCERA ECOSYS Laser

Engine speed

Up to 30 pages per minute in A4

Resolution

Fast 1,200 dpi

Duty cycle

Max. 20,000 pages per month

Max. average 2,700 pages per month

Warm-up time

Approx. 19 seconds or less from power on

Time to first page

Approx. 6 seconds or less

Dimensions (W x D x H)

375 mm x 393 mm x 250 mm

Weight

Approx. 12 kg (main unit)

Power source

220/240 V, 50/60 Hz

Power consumption

Printing: 525 W

Stand-by: 7.3 W

Power-saving (ECOpower): 4.4 W

Noise (ISO 7779 / ISO 9296)

Printing in full-speed mode: 54 dB(A)

Printing in half-speed mode: 49 dB(A)

Stand-by: 30 dB(A)

Safety standards

GS, TÜV, CE

This unit is manufactured according to ISO 9001 quality standard and ISO 14001 environmental standard.

Paper handling

All paper capacities quoted are based on a paper thickness of max. 0.11 mm. Please use paper recommended by KYOCERA under normal environmental conditions.

Input capacity

50-sheet multi-purpose tray; 60-220 g/m²;

A4, A5, A6, B5, Letter, Legal, Custom

(70 x 148 – 215.9 x 356 mm), Folio, Oficio2

250-sheet universal paper cassette, 60-120 g/m²;

A4, A5, A6, B5, Letter, Legal, Custom

(105 x 148 mm – 215.9 x 297 mm), Folio, Oficio2

Max. input capacity incl. options: 550 sheets A4

Duplex functionality

Duplex as standard supports A4, A5, B5, Letter, Legal,

60-105 g/m²

Output capacity

250 sheets face-down

Controller

CPU

PowerPC 405F5/360 MHz

Memory

32 MB RAM + ECOMemory + 512 MB in 1 SDRAM DIMM slot

Standard interface

USB 2.0 (Hi-Speed), KUJO interface slot

Controller language

PRESCRIBE IIe

Emulations

PCL6/PCL5e incl. PjL, KPDL 3 (PostScript 3 compatible) with automatic emulation switching (AES), Line Printer, IBM Proprinter X24E, Epson LQ-850, Diablo 630

Operating systems

All current Windows operating systems, Mac OS X Version 10.2 or higher, UNIX, LINUX as well as other operating systems on request

Fonts/Barcodes

80 outline fonts accessible in all emulations, 1 bitmap font, 45 types of one-dimensional barcodes plus two-dimensional barcode PDF-417,

Downloadable fonts: KYOCERA, PCL + TrueType format,

Type 1 + 3 format

Consumables

TK-160 Toner-Kit

Microfine toner for 2,500 pages A4 in accordance

with ISO/IEC 19752

Capacity of starter toner is 1,000 pages A4 in accordance

with ISO/IEC 19752

Options

PF-100 Paper feeder (max. 1 unit)

Max. 250 sheets; 60–120 g/m²; A4, A5, B5, Letter, Legal,

Custom (148 x 210 mm – 215.9 x 297 mm)

CB-130 Cabinet

Desk with storage capacity

Memory upgrade

1 SDRAM DIMM slot (64, 128, 256, 512 MB)

CompactFlash* card

1 slot (up to 4 GB) for printing forms, fonts, logos, macro

storage

Optical interface

PS159: Wireless LAN (802.11b/g)

PS1109 Gigabit Ethernet:

10BaseT / 100BaseTX / 1000BaseT (RJ-45)

PS129 Fibre Optic: 100BaseSX (SC)

PS1129 Gigabit Fibre Optic: 1000BaseSX (SC)

Model variations

FS-1120DN – incl. integrated IB-23 Network card

Maintenance

MK-160 Maintenance-kit: 100,000 pages

Warranty

2-year warranty as standard.

KYOCERA guarantees the drum and developer for 3 years or maximum 100,000 pages (whichever occurs sooner), provided each printer is used and cleaned in accordance with the service instructions.

KYO LIFE



Your KYOCERA Business Partner:

KYOCERA MITA (UK) Ltd, 8 Beacontree Plaza, Gillette Way, Reading RG2 0BS
Tel 0118 931 1500, Fax 0118 931 1108
www.kyoceramita.co.uk, info@kyoceramita.co.uk

* KYOCERA does not warrant that any specifications mentioned will be error-free. Specifications are subject to change without notice. Information is correct at time of going to press. All other brand and product names may be registered trademarks or trademarks of their respective holders and are hereby acknowledged. KYOcount is a trademark of KYOCERA MITA Europe B.V.

KYOCERA

Product depicted includes optional extras.