

IP-COM

Pro-S24

ProFi Switch

Pro-S24

ProFi Switch

Description

Pro-S24 is a Gigabit switch of IP-COM ProFi software controller switch series, specially designed for such scenarios as SMBs and smart hotels. The switch provides 24 10/100/1000 Mbps Base-T Ethernet ports and 4 separate 1000 Mbps Base-X SFP ports and supported centralized control by IP-COM ProFi software controller, allow users to deploy the network without being restricted by geographic location



Feature

- Comply with IEEE 802.3, IEEE 802.3u, IEEE 802.3ab, IEEE 802.3z, IEEE 802.3x, IEEE 802.1p, IEEE 802.1q, IEEE 802.1w, IEEE 802.1d, IEEE 802.1s standards
- 24 x 10/100/1000 Base-T Ethernet ports , 4 separate 1000 Base-X SFP ports
- 16 K MAC address table and MAC address auto-learning
- 12Mb large buffer
- Support abundant services, such as static routing, VLAN, IGMP, QoS, ACL, DHCP Snooping, ARP and Telnet
- Support ProFi Software Controller management and local web visualization management

Key Appeal



Routing Protocol

The switch Support static routing protocol which support layer-2 isolation and layer-3 intercommunication, thus achieving efficient and fast layer-3 forwarding.



Centralized Management

Support centralized management and device status monitoring by the ProFi Software controller, and support remote access to cloud services, which is not restricted by the installation location of the device.



12M large buffer

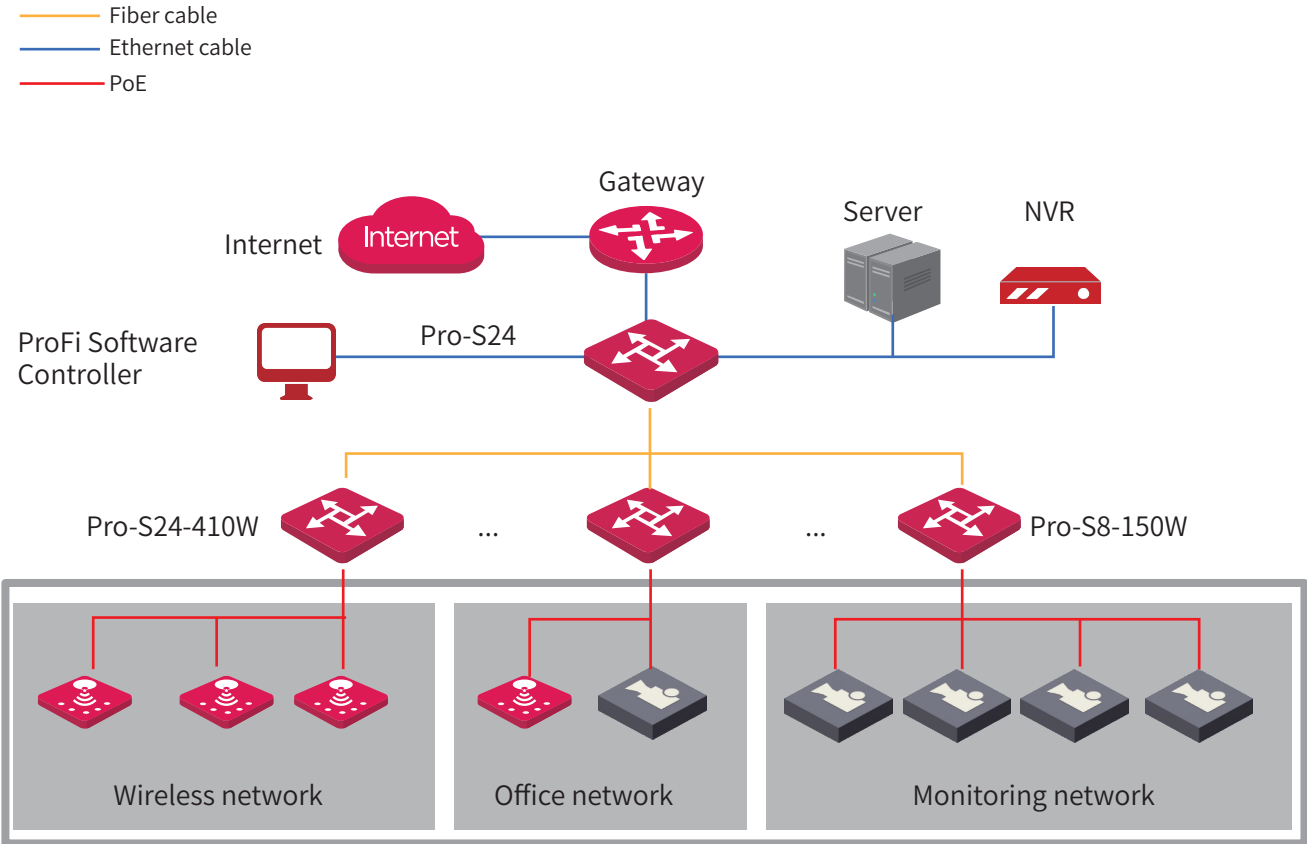
Provides a large 12Mb buffer, which can meet the network application requirements of large traffic bursts such as engine search, IPTV, P2P download, and no packet loss during traffic bursts.



Visualization

The system can generate a network topology automatically. It support IP camera discovery based on ONVIF protocol and network device discovery based on LLDP, as well as online/offline status detection for all devices in the network, which improves the LAN operation and maintenance efficiency and also reduces the maintenance cost.

Typical Application



Technical Specification

Product Model	Pro-S24
Hardware Specifications	
Network Standard	IEEE802.3,IEEE802.3u,IEEE802.3ab,IEEE802.3z,IEEE802.3x,IEEE802.3af/at, IEEE802.1p,IEEE802.1q,IEEE802.1w,IEEE802.1d,IEEE802.1s
LED Indicator	One Link/Act LED indicator for each port One Power LED indicator for each device One SYS LED indicator for each device
Fixed Port	24 x 10/100/1000 Base-T Ethernet ports 4 x 1000 Base-X SFP port
Port Lightning Protection	≥6KV
Forwarding Mode	Store and forward
MAC Address Table	16K
Packet buffer	12Mb
Switching capacity	56Gbps
Packet forwarding rate	41.7Mpps
Input Voltage	100-240V AC 50/60Hz
Dimensions (L * W * H)	440 mm x 179.6 mm x 44 mm
Whole Switch Power Consumption	Whole switch consumption: <24 W
Operating Environment	Operating temperature: 0°C - 45°C Storage temperature: -40°C - 70°C Operating humidity: (10% - 90%)RH, non-condensing Storage humidity: (5% - 90%)RH, non-condensing

Technical Specification

Software Specifications	
Security features	<ul style="list-style-type: none"> Support ARP receiving limit Support unknown mac address discard Support DoS attack defense Support 802.1x security authentication Support RADIUS authentication
VLAN	<ul style="list-style-type: none"> IEEE 802.1Q VLAN VLAN Layer-3 interfaces Support three port modes: Access, Trunk and Hybrid
DHCP	<ul style="list-style-type: none"> Support DHCP server Support DHCP relay Support DHCP snooping Support Option 82 policy configuration
Routing	<ul style="list-style-type: none"> Support inter-VLAN routing Support IPv4 static routing Support dynamic ARP and static ARP Support ARP aging configuration
Port aggregation	<ul style="list-style-type: none"> Support static aggregation Support LACP dynamic aggregation Support a maximum of 32 aggregation groups and a maximum of 8 member ports in each group
STP (Spanning Tree Protocol)	<ul style="list-style-type: none"> Support IEEE 802.1d STP (Spanning Tree Protocol) Support IEEE 802.1w RSTP (Rapid Spanning Tree Protocol) Support IEEE 802.1s MSTP (Multiple Spanning Tree Protocol) Support edge ports Support BPDU statistics Support BPDU Guard, BPDU Filter, Support Root Guard, Loop Guard, and Loopback-detection
Multicast	<ul style="list-style-type: none"> IGMP Snooping V1/V2/V3 Support port fast leave
Port Mirroring	<ul style="list-style-type: none"> Support N: 1 port mirroring

Technical Specification

Software Specifications	
QoS	<ul style="list-style-type: none"> Support SP (Strict Priority) Support SWRR (Simple Weighted Round Robin) Support WRR (Weighted Round Robin) Support 802.1p port trust mode Support DSCP port trust mode Support a maximum of 8-queue service quality mapping Support Tail Drop Support storm suppression Support port speed limit
ACL	<ul style="list-style-type: none"> Support MAC ACL Support IPv4 ACL
Loading and upgrade	<ul style="list-style-type: none"> Support FTP/TFTP/HTTP upgrade Support configuration import and export
Local visualization management	<ul style="list-style-type: none"> Support discovery of such network devices as routers, switches, APs based on LLDP Support IP camera discovery based on ONVIF protocol Support automatic generation of topology Support local view and main view Support online/offline status detection for devices Support remotely rebooting IP cameras Support loop alerts Support custom device types and device names
Management and maintenance	<ul style="list-style-type: none"> Support centralized control and management by ProFi software controller Support CLI configuration Support Telnet remote configuration Support SNMP V1/V2/V3 Support web management and maintenance Support system logs Support log classification Support NTP Support Ping & Tracert tests Support memory and CPU monitoring
Certifications	FCC、CE、RoHS

IP-COM
World Wide Wireless

IP-COM NETWORKS CO., LTD.

Tower E3, No.1001, Zhongshanyuan Road,
Nanshan District, Shenzhen, China. 518052
Service: info@ip-com.com.cn
Inquiry: marketing@ip-com.com.cn
Tel: +86-755-27653089