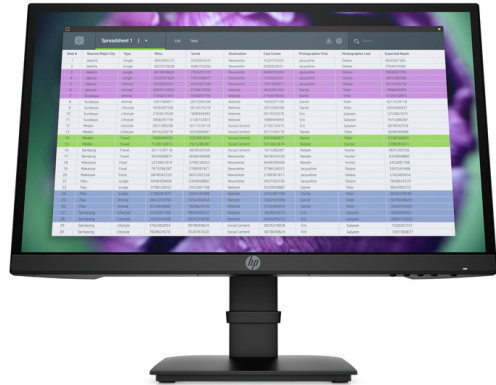




HP P22 G4 22 FHD Monitor series

The amazingly affordable business display.

Put your content front and center on the HP P22 G4 FHD Monitor. The stylish, sleek design delivers essential presentation features, visual comfort, and advanced connectivity at a remarkable price point.



Crisp images for all your content.

- Easily navigate documents and spreadsheets and work in multiple applications side by side on the 21.5-inch diagonal Full HD IPS screen with vibrant 1920 x 1080 resolution.

Stylishly designed.

- Complement your workspace with a contemporary display that has a 3-sided micro-edge bezel for practically unlimited sightlines and virtually seamless multi-display¹ setups. See clearly from almost anywhere in the room with 178° viewing angles.

Versatile connectivity.

- Quickly connect to your devices and additional displays through the HDMI and DisplayPort™ connectors. Get legacy device compatibility from the VGA.

Featuring

- Attach your HP PC or select HP Thin Client directly behind the display.
- Filter blue light emission and shift colors to a warmer spectrum for more comfortable viewing with HP Low Blue Light mode.
- Free up valuable desk space with mounting options enabled by the 100-mm VESA pattern.
- Energy efficiency and environmental sustainability are built into every ENERGY STAR® and TCO certified, EPEAT® 2019 registered, and low halogen display.
- Customize a total solution with options designed for your display, like the HP S101 Speaker Bar.
- We're just a call or click away. Rest assured that your IT investment is supported with our three-year standard limited warranty. To extend your protection, select an optional HP Care Pack.

HP P22 G4 22 FHD Monitor series Specifications Table

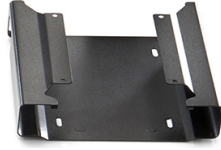


Display type	IPS
Panel Active Area	18.74 x 10.53 in 47.6 x 26.77 cm
Brightness	250 nits ¹
Contrast ratio	1000:1 ¹
Response Ratio	5ms GtG (with overdrive) ¹
Product colour	Black
Aspect ratio	16:9 ¹
Native resolution	FHD (1920 x 1080)
Resolutions supported	1024 x 768; 1280 x 1024; 1280 x 720; 1280 x 800; 1366 x 768; 1440 x 900; 1600 x 900; 1680 x 1050; 1920 x 1080; 640 x 480; 720 x 400; 800 x 600
Display features	Asset control; On-screen controls; Plug and Play; User controls; Low blue light mode; Anti-glare
User controls	Brightness; Color control; Exit; Image control; Information; Management; Power control; Input control; Menu control
Input signal	1 DisplayPort™ 1.2 in (with HDCP support); 1 HDMI 1.4 (with HDCP support); 1 VGA
Display size (diagonal)	21.5"
Display size (diagonal, metric)	54.61 cm (21.5")
Camera	No integrated camera
Environmental	Operating temperature: 5 to 35°C; Operating humidity: 20 to 80% non-condensing;
Power	Input voltage 100 to 240 VAC
Power consumption	21 W (maximum), 19 W (typical), 0.3 W (standby)
Dimensions	19.59 x 1.81 x 11.85 in 49.73 x 4.59 x 30.11 cm (Without stand.)
Weight	9.12 lb 4.14 kg (With stand.)
Physical security features	Security lock-ready ³
Energy efficiency compliance	ENERGY STAR® certified; EPEAT® 2019 registered ⁴
Certification and compliance	Australian-New Zealand MEPS; BSMI; CB; CCC; CE; CEL; CSA; EAC; Energy Star; FCC; ICES; ISO 9241-307; KC; KCC; NOM; PSB; TUV-S; UL; VCCI; Vietnam MEPS; WEEE; ISC
Sustainable impact specifications	Arsenic-free display glass; Low halogen; Mercury-free display backlights; TCO Certified ²
What's in the box	HDMI cable; VGA cable; AC power cable
Pixels per inch (ppi)	102 ppi
Panel bit depth	6 bit
Vertical viewing angle	178°
Horizontal viewing angle	178°
Bezel	3-sided micro-edge
Swivel	No swivel
Tilt	Tilt: -5 to +23°
Pivot	No pivot
Height adjustment range	No height adjust
VESA mounting	100 mm x 100 mm
Hardness	3H
Screen treatment	Anti-glare
Touch-enabled	Not touch-enabled
Integrated privacy filter	No
Flicker-free	Yes
Low blue light modes	Yes (TÜV certified)
Display scan frequency (horizontal)	30-86 KHz
Display scan frequency (vertical)	48-75 Hz
Pixel pitch	0.247 mm

HP P22 G4 22 FHD Monitor series

Accessories and services (not included)

HP Desktop Mini Security/Dual VESA Sleeve v2



Wrap your HP Desktop Mini PC in the HP Desktop Mini Security/Dual VESA Sleeve v2 to securely mount it—with or without an Expansion Module¹—behind your display, position the solution on a wall, and lock it down with the integrated security bracket and optional HP Ultra-Slim Cable Lock.

Product number: 2JA32AA

HP S101 Speaker Bar



Add rich stereo audio to select HP displays¹ without crowding your desk with the HP S101 Speaker Bar, which fits neatly underneath the display head and connects through USB.

Product number: 5UU40AA

HP Quick Release Bracket 2



Use the HP Quick Release Bracket 2 to attach your HP Desktop Mini to an HP display¹ and a variety of stands, arms or wall mounts.² The failsafe "Sure-Lock" mechanism snaps the PC securely in place, and can be further secured with a theft-deterrent security screw.

Product number: 6KD15AA

HP Sure Key Cable Lock



Take the guess work out of securing your notebook, display, dock, and accessories with the removable, interchangeable heads of the HP Sure Key Cable Lock.¹

Product number: 6UW42AA

HP 5-year Next Business Day Onsite Standard Monitor Hardware Support



HP Care Pack

Receive 5 years of next business day onsite repair from an HP-qualified technician for your computing device, if the issue cannot be solved remotely. For more information on Care Pack services, please visit www.hp.com/go/cpc.

Product number: U7935E

HP P22 G4 22 FHD Monitor series

Messaging Footnotes

¹ Each display sold separately.

² HP Desktop Mini, HP Chromebox, and HP Thin Client sold separately. Requires HP B300 PC Mounting Bracket for Monitors, sold separately.

³ Mounting hardware sold separately.

⁴ Each accessory sold separately.

⁵ Based on US EPEAT® registration according to IEEE 1680.1-2018 EPEAT®. Status varies by country. Visit www.epeat.net for more information.

⁶ External power supplies, power cords, cables and peripherals are not Low Halogen. Service parts obtained after purchase may not be Low Halogen.

⁷ HP Care Packs sold separately. Service levels and response times for HP Care Packs may vary depending on your geographic location. Service starts on date of hardware purchase. Restrictions and limitations apply. For details, visit www.hp.com/go/cpc. HP Services are governed by the applicable HP terms and conditions of service provided or indicated to Customer at the time of purchase. Customer may have additional statutory rights according to applicable local laws, and such rights are not in any way affected by the HP terms and conditions of service or the HP Limited Warranty provided with your HP Product.

Technical Specifications Footnotes

¹ All specifications represent the typical specifications provided by HP's component manufacturers, actual performance may vary either higher or lower.

² External power supplies, power cords, cables and peripherals are not Low Halogen. Service parts obtained after purchase may not be Low Halogen.

³ Lock is sold separately.

⁴ EPEAT® 2019 registered where applicable. EPEAT® registration varies by country. See www.epeat.net for registration status by country.

Sign up for updates hp.com/go/getupdated

© Copyright 2021 HP Development Company, L.P. The information contained herein is subject to change without notice. The only warranties for HP products and services are set forth in the express warranty statements accompanying such products and services. Nothing herein should be construed as constituting an additional warranty. HP shall not be liable for technical or editorial errors or omissions contained herein.

DisplayPort™ and the DisplayPort™ logo are trademarks owned by the Video Electronics Standards Association (VESA®) in the United States and other countries. ENERGY STAR is a registered trademark owned by the U.S. Environmental Protection Agency.

4AA7-8265EEAP, April 2021

--

