



# HP EliteDisplay E223d 21.5-inch Docking Monitor

## Activate an instant workspace

Clear your clutter with the easy, efficient connectivity of the HP EliteDisplay E223d 21.5-inch Docking Monitor. Set up your devices and network at the display one time, then connect your notebook through just one USB-C™ cable<sup>1</sup> and you're ready to work.



### Single-cable simplicity

Streamline your space with the clean, convenient cabling of one USB-C™<sup>1</sup> connection from your notebook to a display that's also a dock to access your devices, network, and video and power your PC.<sup>1</sup>

### Flexible by design

Find your sweet spot with adjustable tilt, height, swivel, and pivot rotation. Add a second display<sup>2</sup> daisy-chained through your PC's USB-C™ connection. 3-sided micro-edge bezels ensure a virtually seamless dual-display view.

### Take your PC off the desk

Maximize space in desktop PC environments by mounting your HP EliteDesk Mini Desktop PC directly behind the display<sup>3</sup> and powering it through USB-C™.<sup>1</sup> Or, lift the whole solution and mount<sup>4</sup> it on a wall or arm.

### Featuring

Filter blue light emission and shift colors to a warmer spectrum for more comfortable viewing with HP Low Blue Light mode.

Customize a total solution with options like the HP S101 Speaker Bar, which attaches easily to the lower bezel to add stereo audio at the display.

Manage your display and make it work for you. HP Display Assistant allows you to quickly resize screen partitions so you can work in separate regions of the screen and helps deter theft by dimming a display that's disconnected without approval.

Rest assured that your IT investment is supported with our three-year standard limited warranty. To extend your protection, select an optional HP Care service.



Monitor connectivity options



Port: USB-C™



Share



Efficient workspace

## HP EliteDisplay E223d 21.5-inch Docking Monitor Specifications Table



<b>Display type</b>	IPS with LED backlight
<b>Panel Active Area</b>	18.74 x 10.53 in 47.6 x 26.77 cm
<b>Display size (diagonal)</b>	21.5"
<b>Viewing angle</b>	178° horizontal; 178° vertical
<b>Brightness</b>	250 cd/m <sup>2</sup> <sup>1</sup>
<b>Contrast ratio</b>	1000:1 static; 500000:1 dynamic <sup>1</sup>
<b>Response Ratio</b>	5 ms gray to gray
<b>Product colour</b>	Silver bezel, Black stand
<b>Aspect ratio</b>	16:9 <sup>1</sup>
<b>Native resolution</b>	FHD (1920 x 1080 @ 60 Hz)
<b>Resolutions supported</b>	1024 x 768; 1280 x 1024; 1280 x 720; 1280 x 800; 1440 x 900; 1600 x 900; 1680 x 1050; 1920 x 1080; 640 x 480; 720 x 400; 800 x 600
<b>Display features</b>	Anti-glare; On-screen controls; Plug and Play
<b>User controls</b>	Brightness; Color control; Contrast; Exit; Image control; Information; Management; Power control; Input control; Menu control; USB host selection
<b>Ports and Connectors</b>	1 USB Type-C™ (DisplayPort™ 1.2, power delivery up to 65 W); 5 USB 3.1 (4 downstream, 1 upstream, power delivery up to 7.5 W)
<b>Environmental</b>	Operating temperature: 5 to 35°C; Operating humidity: 20 to 80% non-condensing
<b>Power</b>	Input voltage 100 to 240 VAC
<b>Power consumption</b>	18 W (maximum), 15 W (typical), 0.3 W (standby)
<b>Dimensions</b>	19.22 x 1.765 x 11.55 in 48.83 x 4.483 x 29.33 cm (Without stand.)
<b>Weight</b>	11.02 lb 5.08 kg (With stand.)
<b>Ergonomic features</b>	Swivel: ±45°; Tilt: -5 to +23°; Swivel: 90°
<b>Physical security features</b>	Security lock-ready <sup>3</sup>
<b>Certification and compliance</b>	Australia MEPS; BIS; BSMI; CB; CCC; CE; CEL; cTUVus; EAC; FCC; ICES; ISO 9241-307; KC; KCC; NOM; PSB; VCCI; Vietnam MEPS; WEEE; ISC; TUS-GS
<b>Environmental specifications</b>	Arsenic-free display glass; Low halogen; Mercury-free display backlights <sup>2</sup>
<b>What's in the box</b>	AC power cord; USB cable; USB Type-C™ cable; DC-DC cable; DC jack dongle; External power supplier; QSP; Product notice
<b>Warranty</b>	Protected by HP, including a 3 year standard limited warranty. Optional HP Care Pack Services are extended service contracts that extend your protection beyond the standard warranties. Service levels and response times for HP Care Packs may vary depending on your geographic location. Service starts on date of hardware purchase. Restrictions and limitations apply. For details, visit <a href="http://www.hp.com/go/cpc">www.hp.com/go/cpc</a>

## HP EliteDisplay E223d 21.5-inch Docking Monitor

### Accessories and services (not included)

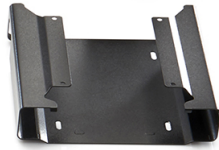
---

HP B300 PC Mounting Bracket



Customize an altogether better solution with the HP B300 PC Mounting Bracket, which lets you attach your HP Workstation, HP Desktop Mini, HP Chromebox or select HP Thin Client directly behind select 2017 and 2018 HP EliteDisplays and HP Z Displays.<sup>1</sup>  
**Product number: 2DW53AA**

HP Desktop Mini Security/Dual VESA Sleeve v2



Wrap your HP Desktop Mini PC in the HP Desktop Mini Security/Dual VESA Sleeve v2 to securely mount it—with or without an Expansion Module<sup>1</sup>—behind your display, position the solution on a wall, and lock it down with the integrated security bracket and optional HP Ultra-Slim Cable Lock.  
**Product number: 2JA32AA**

HP S101 Speaker Bar



**Product number: 5UJ40AA** Attach HP displays<sup>1</sup> without crowding your desk with the HP S101 Speaker Bar, which fits neatly underneath the display head and connects through USB.

HP Quick Release Bracket 2



Use the HP Quick Release Bracket 2 to attach your HP Desktop Mini to an HP display<sup>1</sup> and a variety of stands, arms or wall mounts.<sup>2</sup> The failsafe "Sure-Lock" mechanism snaps the PC securely in place, and can be further secured with a theft-deterrent security screw.  
**Product number: 6KD15AA**

HP Integrated Work Center for Desktop Mini and Thin Client



Make the most of small work spaces with an HP IWC Desktop Mini/Thin Client that lets you create a compact desktop solution by combining a display<sup>1</sup> with your choice of platform<sup>1</sup> and giving you convenient front access to all of its inputs.  
**Product number: G1V61AA**

HP UC Wired Headset



Enable crystal-clear sound and noise cancelling for meeting on-the-fly through your Windows notebook or tablet with the durable and lightweight HP UC Wired Headset, designed for a comfortable work day.<sup>1,2</sup>  
**Product number: K7V17AA**

HP 4 year Next Business Day Exchange Hardware Support for Monitors (up to 22 inch)



When you can't afford to wait for your device to be exchanged, let HP Hardware Next Business Day Advance Exchange get you back up and running as quickly as possible. You'll get remote technical assistance to help you resolve problems. Then, if needed, we'll ship you a replacement unit within the next business day – along with a prepaid waybill to ship back your defective unit.  
**Product number: U0J10E**

# HP EliteDisplay E223d 21.5-inch Docking Monitor

## Messaging Footnotes

<sup>1</sup> Video over USB-C™ requires a PC with USB-C™ DisplayPort™ Alt mode or Thunderbolt™. Power delivery over USB-C™ up to 65 Watts. Refer to Power Output in product QuickSpecs for exact specifications, PC must be compatible with the display's power output.

<sup>2</sup> Additional display sold separately. Source PC must have a USB-C™ or USB-A connector. PC connection to the display through USB-C™ is only supported up to 65 Watts power delivery. USB-A connection requires source PC to support DisplayLink. Not compatible over DisplayPort™, VGA or HDMI connections.

<sup>3</sup> HP EliteDesk Mini Desktop PC sold separately. Display mounting requires HP B300 PC Mounting Bracket for Monitors, sold separately.

<sup>4</sup> Mounting hardware sold separately.

<sup>5</sup> Each accessory sold separately.

<sup>6</sup> HP Care Packs sold separately. Service levels and response times for HP Care Packs may vary depending on your geographic location. Service starts on date of hardware purchase. Restrictions and limitations apply. For details, visit [www.hp.com/go/pc](http://www.hp.com/go/pc). HP Services are governed by the applicable HP terms and conditions of service provided or indicated to Customer at the time of purchase. Customer may have additional statutory rights according to applicable local laws, and such rights are not in any way affected by the HP terms and conditions of service or the HP Limited Warranty provided with your HP Product.

## Technical Specifications Footnotes

<sup>1</sup> All specifications represent the typical specifications provided by HP's component manufacturers, actual performance may vary either higher or lower.

<sup>2</sup> External power supplies, power cords, cables and peripherals are not Low Halogen. Service parts obtained after purchase may not be Low Halogen.

<sup>3</sup> Lock is sold separately.

Sign up for updates [hp.com/go/getupdated](http://hp.com/go/getupdated)

© Copyright 2019 HP Development Company, L.P. The information contained herein is subject to change without notice. The only warranties for HP products and services are set forth in the express warranty statements accompanying such products and services. Nothing herein should be construed as constituting an additional warranty. HP shall not be liable for technical or editorial errors or omissions contained herein. DisplayPort™ and the DisplayPort™ logo are trademarks owned by the Video Electronics Standards Association (VESA®) in the United States and other countries. USB Type-C™ and USB-C™ are trademarks of USB Implementers Forum.

ENERGY STAR® and the ENERGY STAR® mark are registered trademarks of the U.S. Environmental Protection Agency. DisplayPort™ and the DisplayPort™ logo are trademarks owned by the Video Electronics Standards Association (VESA®) in the United States and other countries.

May 2019

--

