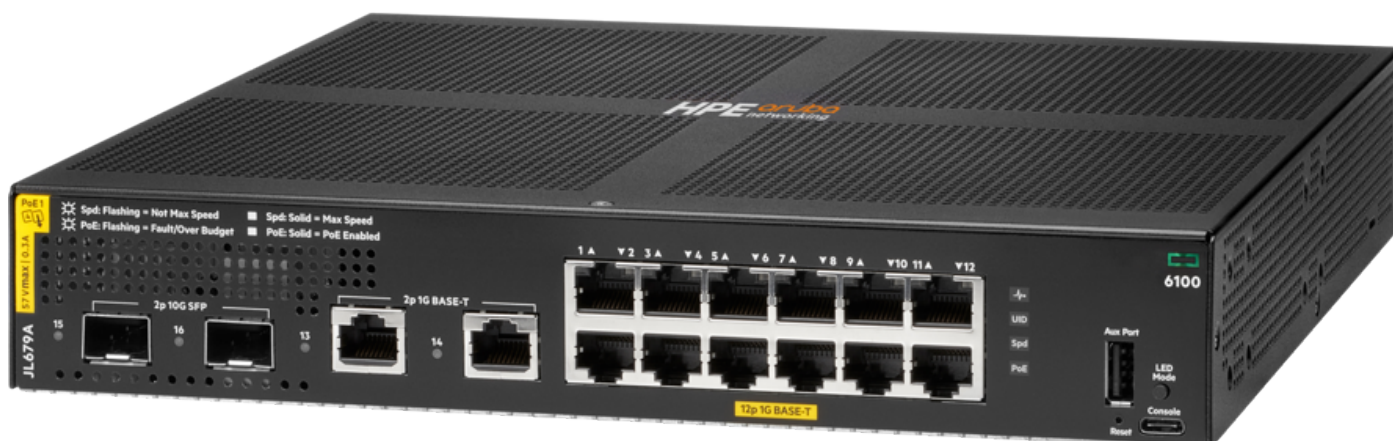


# HPE Aruba Networking CX 6100 Switch Series

HPE Aruba Networking CX 6100 12G Class4 PoE 2G/2SFP+ 139W Switch (JL679A)



## What's new

- Simplify IT operations with next-gen Layer 2 switch series that provides entry level, reliable, and convenient wired access connectivity.
- Right size with 12, 24, and 48 port 1U models with convenient built-in 1/10 GbE uplinks and up to 740W of Class 4 PoE.
- Silent deployment with compact and fanless 12 port PoE model.
- Flexibility to manage and simplify configurations with Aruba Central, Aruba NetEdit, easy to use Web GUI, or industry

## Overview

The HPE Aruba Networking CX 6100 Switch Series is a modern family of entry level access switches ideal for branch offices, mid-market enterprise, and SMB networks. Designed for reliable, simple, and secure access, the HPE CX 6100 switches provide a convenient wired access solution for enterprise networks supporting IoT, mobile, and cloud applications.

Prepare your network for tomorrow's unpredictable demands with a powerful Aruba ASIC architecture and programmable AOS-CX operating system used across the HPE Aruba CX portfolio to deliver a more consistent, more efficient operator experience. This layer 2 switch series has convenient built-in high speed uplinks with up to 740W of IEEE 802.3at Class 4 PoE to support IoT devices such as security cameras and wireless APs. A compact and fanless 12 port model is ideal for use in quiet

---

standard CLI.

- Software defined ready with REST APIs.
- Layer 2 feature set with static routing and switch software embedded with no subscription required to enable.

work spaces. With robust QoS, support for static routing, and IPv6, the HPE CX 6100 also simplifies ownership with no switch software licensing requirements.

## Features

### Entry Level Aruba CX Access Layer Switches

The HPE Aruba Networking CX 6100 Switch Series offers gigabit connectivity with high speed uplinks and optional PoE to provide entry level, reliable, and convenient wired access connectivity for enterprise branch office and SMB networks.

Using Aruba AOS-CX operating system across HPE Aruba Networking CX switching platforms and deployment domains provides a simpler, more consistent operator experience.

Fully-managed enterprise class switches deliver Layer 2 capabilities with support static routing, ACLs, robust QoS, traffic prioritization, sFlow, and IPv6 support.

Right size deployment with choice of 12, 24, and 48 port 1U models with convenient built-in 1/10 GbE uplinks and up to 740W of Class 4 PoE.

Simplifies ownership with no switch software licensing or subscriptions required.

### Performance and Power

The HPE Aruba Networking CX 6100 Switch Series is designed with Aruba ASICs that deliver very low latency, increased packet buffering, and adaptive power consumption.

Deploy wireless access points and IoT devices with HPE Aruba Networking CX 6100 switch models that support up to 740W IEEE 802.3at Class 4 Power over Ethernet for up to 30W per port.

Four built-in wire speed 1/10GbE uplinks eliminate bottlenecks at the access layer where users and devices connect.

### Simplified Configuration and Management

The HPE Aruba Networking CX 6100 Switch Series provides flexibility to manage and simplify configurations with Aruba Central, Aruba NetEdit, easy to use Web GUI, or industry standard CLI.


Aruba NetEdit introduces automation that allows for rapid network-wide changes and verifies policy conformance post network updates.

Manage via single pane of glass with Aruba Central across wired, wireless, and WAN.

Reduce manual IT operation tasks around initial deployment or on-going configuration changes to accommodate adds, moves, and changes with colorless ports using local user roles and local-MAC-Authentication (LMA).

Software-defined ready with REST APIs for fine-grained programmability of network tasks.

---



**Technical specifications****HPE Aruba Networking CX 6100 12G Class4 PoE 2G/2SFP+ 139W Switch**

<b>Product Number</b>	JL679A
<b>Differentiator</b>	The Aruba CX 6100 Switch Series delivers entry level, reliable, and convenient Layer 2 wired access connectivity ideal for branch offices, mid-market enterprise, and SMBs. This model has 12x 10/100/1000BASE-T, 2x 1G/10G SFP ports, and 2x 1GbE ports. 139W Class 4 PoE/PoE+ power.
<b>Ports</b>	12x ports 10/100/1000BASE-T Ports 2x 1G/10G SFP ports 2x 1GbE ports
<b>Memory and processor</b>	Dual Core ARM Cortex A9 @ 1016 Mhz 4 GB DDR3, maximum, depending on model 16 GB eMMC
<b>Latency</b>	1 Gbps: 2.3 $\mu$ Sec , 10 Gbps: 2.6 $\mu$ Sec
<b>Throughput</b>	45.1 Mpps
<b>Switching capacity</b>	68 Gbps
<b>PoE capability</b>	139W Class 4 PoE/PoE+
<b>Input voltage</b>	100-127 VAC / 200-240 VAC
<b>Power consumption</b>	Max Power (w/o PoE): 21.9W Max Power (w/ PoE): 170W
<b>Product dimensions</b>	4.4 x 25.4 x 25.5 cm
<b>Weight</b>	2.8 kg



[For additional technical information, available models and options, please reference the QuickSpecs](#)

## HPE Aruba Networking Services

HPE Aruba Networking services simplify and accelerate the network technology lifecycle, enabling your network to scale with better predictability and cost-effectiveness. Whether you operate your own network and need to improve your IT efficiencies, or you want to offload some of the burden, we have the services you need to reach your goals.

Learn more about what HPE Services - Aruba Networking has to offer at: <https://www.hpe.com/edge/services>

### Support Services

Our support portfolio provides the essential support elements as well as proactive and preventive features to help you improve your team's productivity and get the most from your network. Our support customers benefit from faster issue resolution, simplified operations and efficiencies, and reduced network issues.

### Professional Services

With deep intellectual capital and purpose-built tools, our team delivers a range of standard and custom professional services designed to accelerate your value from HPE Aruba Networking technology.

#### Project based services include:    Annual subscription services include:

- Planning, audit, and assessment
- Architecture review and design
- Deployment, migration, and knowledge transfer
- Network optimization
- Intelligent Operations
- Customer Experience Management

Our [Education Services](#) allow your team to come up to speed quickly.

### HPE GreenLake for Networking

Our NaaS solution, is part of the HPE GreenLake services family, and simplifies network operations, accelerates equipment handling, and increases the value of your HPE Aruba Networking solution. If you need expert guidance and automation-based operations for your team, please explore our NaaS approach through HPE GreenLake for Networking.

**Make the right purchase decision.  
Contact our presales specialists.**



Contact us

Visit [ArubaNetworks.com](https://www.arubanetworks.com)

