

Fujitsu recommends Windows 10 Pro for business.

Data Sheet

FUJITSU Tablet LIFEBOOK U9311X

World's Lightest Convertible With A Pen

Available in red and black, the FUJITSU Tablet LIFEBOOK U9311X is a lightweight 360-degree foldable device. All-day battery runtime and global LTE ensure highest productivity in any place, while security features such as the integrated PalmSecure™ sensor keep your business data protected. Powerful performance and full connectivity with Intel® Thunderbolt™ 4 offer you best-in-class user experience.

Ultra-slim and lightweight Convertible

The very slim and light housing make it very comfortable to carry the device. Thanks to its 360° foldability, it can be immediately turned from a Notebook to a Tablet – and back.

- Available in red or black
- Weighing from 1 kg with a robust magnesium housing
- Durability is MIL-STD-810H tested
- Intel® Iris® Xe Graphics

Security at its best

No compromises in security and data protection – the integrated PalmSecure™ sensor turns your unique palm vein pattern into your personal key.

- PalmSecure™
- Fingerprint & Full HD IR Camera supporting Windows Hello
- SmartCard reader
- Kensington Lock support

Excellent connectivity and usability

Newest interfaces and convenient features. All ports are full-sized – even the LAN port. No adapters, that can be lost and cause additional costs, needed.

- Complete set of full-sized interfaces: HDMI, LAN and USB Type-C with Intel® Thunderbolt™ 4
- 13.3 inch FHD anti-glare touch display with pen input
- Pen garage with inductive charging function
- 5 MP rear camera

Convenient mobility supporting usage on the go

Highest productivity on business trips without empty batteries or waste of time

- All-day battery runtime offers you the exceptional mobility that you need when on the move
- Anytime USB charging functionality for your peripheral devices, even when the system is turned off
- Always connected and instantly ready



Components

Base unit	LIFEBOOK U9311X black	LIFEBOOK U9311X red
Operating systems		
Operating system pre-installed	Windows 10 Pro. Fujitsu recommends Windows 10 Pro for business. Windows 10 Home	Windows 10 Pro. Fujitsu recommends Windows 10 Pro for business. Windows 10 Home
Operating system compatible	Windows 10	Windows 10
Operating system notes	Windows 10 Support: After the end of the product life FUJITSU will continue to test and support all upcoming Window 10 releases for a period of maximum 5 years – depending on the available extension of hardware services through FUJITSU Warranty top ups. For details please see “FUJITSU Service Statement for Windows 10 Semi-Annual-Channel Support” at http://support.ts.fujitsu.com .	Windows 10 Support: After the end of the product life FUJITSU will continue to test and support all upcoming Window 10 releases for a period of maximum 5 years – depending on the available extension of hardware services through FUJITSU Warranty top ups. For details please see “FUJITSU Service Statement for Windows 10 Semi-Annual-Channel Support” at http://support.ts.fujitsu.com .
Processor		
	Intel® Core™ i7-1185G7 processor (4 Cores / 8 Threads)	
	Intel® Core™ i5-1145G7 processor (4 Cores / 8 Threads)	
	Intel® Core™ i5-1135G7 processor (4 Cores / 8 Threads) *	
	*Processor only for retail, SMB, education and government	
Memory		
	8 GB onboard Memory LPDDR4 16 GB onboard Memory LPDDR4 32 GB onboard Memory LPDDR4	
	No DIMM	
WLAN	Intel WiFi 6 AX201 & BT	
Bluetooth	V5.1	
3G/4G	Sierra Wireless EM7421 (Cat7) LTE Fibocom L850-GL (Cat9)	
Hard disk drives (internal)		
	PCIe-SSD, 512 GB M.2 NVMe module, SED	
	PCIe-SSD, 256 GB M.2 NVMe module, SED	
	PCIe-SSD, 32 GB Optane + 512 GB M.2 NVMe module, SED	
	PCIe-SSD, 2 TB M.2 NVMe module, SED	
	PCIe-SSD, 1 TB M.2 NVMe module, SED	
Hard disk notes	One Gigabyte equals one billion bytes, when referring to hard disk drive capacity. Accessible capacity may vary, also depending on used software. Up to 20 GB of HDD space is reserved for system recovery	
4G/ LTE (optional)		
	LTE Sierra Wireless EM7421 (Cat. 7)	
	LTE module Fibocom L850-GL(Cat.9)	
Display	33.8 cm (13.3-inch),IPS,Full HD,Anti-glare touchscreen,1,920 x 1,080 pixel,1000:1,400 cd/m²	
Multimedia		
Camera	Front: IR Cam (2 MP) supporting Windows Hello with LED Out camera: 5 MP with autofocus on top of C cover	

Base unit

Base unit	LIFEBOOK U9311X black	LIFEBOOK U9311X red
-----------	-----------------------	---------------------

General system information

Chipset	Integrated in CPU	
Supported capacity RAM (min.)	8 GB	
Supported capacity RAM (max.)	32 GB	
Memory slots	LPDDR4 (4266 MHz)	
Memory notes	8 GB / 16 GB / 32 GB onboard LPDDR4 (3,200 MHz) Dual channel support	
LAN	10/100/1,000 MBit/s Intel® I219LM	
LAN notes	Intel vPro capable	
Integrated WLAN	Intel WiFi 6 AX201 with integrated BT 5.1	
BIOS version	UEFI Specification 2.7	
BIOS features	InsydeH2O BIOS	
Audio type	On board	
Audio codec	Realtek ALC255	
Audio features	2x digital array microphones, 2x built-in speakers (stereo)	
MIL-STD tested	Yes, selected MIL-STD-810H tests passed. MIL-STD-810H test results are not a guarantee of future performance under identified test conditions. Accidental damage is not covered under standard international limited warranty.	
Color	Black	Red
Material	Magnesium	Magnesium

Display

Display	33.8 cm (13.3-inch), IPS, Full HD, Anti-glare touchscreen, 1,920 x 1,080 pixel, 1000:1, 400 cd/m ²	33.8 cm (13.3-inch), IPS, Full HD, Anti-glare touchscreen, 1,920 x 1,080 pixel, 1000:1, 400 cd/m ²
Display notes	Wide-view high-bright LED display (for enhanced outdoor viewing). With magnesium display lid.	Wide-view high-bright LED display (for enhanced outdoor viewing). With magnesium display lid.
Sensors	3-axis Accelerometer Gyroscope Magnetic Field Sensor Compass	3-axis Accelerometer Gyroscope Magnetic Field Sensor Compass
Aspect ratio	16:9	16:9
Brightness - typical	400 cd/m ²	400 cd/m ²
Contrast - typical	1000:1	1000:1
Digitizer / Touch Technology	Wacom Digitizer for pen (AES) input plus capacitive 10 finger multi-touch screen	Wacom Digitizer for pen (AES) input plus capacitive 10 finger multi-touch screen

Graphics

Base unit	LIFEBOOK U9311X black	LIFEBOOK U9311X red
TFT resolution (HDMI)	up to 4,096 x 2,160 @ 60 Hz	up to 4,096 x 2,160 @ 60 Hz
Graphics brand name	Intel® Iris® Xe Graphics (with Dual channel memory)	Intel® Iris® Xe Graphics (with Dual channel memory)
Graphics features	3 Display Support (2 external, 1 internal) HDCP support DirectX® 12 OpenGL® 4.5	3 Display Support (2 external, 1 internal) HDCP support DirectX® 12 OpenGL® 4.5
Graphics notes	Shared memory depending on main memory size and operating system 3D accelerator	Shared memory depending on main memory size and operating system 3D accelerator

Interfaces

DC-in	1
Audio: line-out / headphone	1 (combo port with Audio line-in)
Audio: line-in / microphone	1 (combo port with Audio line-out)
Internal microphones	2x digital array microphones
USB 3.2 Gen1 (5 Gbps) total	2x Type-A (1 with Anytime USB charge functionality)
USB 4.0 Gen3 (20 Gbps) total	2 x Type-C Intel® Thunderbolt™ 4 (with Power Delivery functionality), DP 1.4
USB Type-C	2 USB 4 Gen3 Thunderbolt™ 4, Power Delivery (15W), DP 1.4
HDMI	1 v1.4

Interfaces

Ethernet (RJ-45)	1
Memory card slots	1 (USH-II) SD 4.0 standard SD/microSD card: 2GB SDHC/microSDHC card: 32GB SDXC/microSDXC card: 2TB Speed Class: up to UHS-II (156MB/s)
SmartCard slot	1
SIM card slot	1 (Nano-SIM, only for models with integrated 4G/LTE module)
Docking connector for Port Replicator	USB Type-C Portreplicator
Kensington Lock support	1

Port Replicator interfaces (optional)

	Thunderbolt™ 4 PR	USB Type-C PR	Thunderbolt™ 3 PR Model: NPR48
DC-in	1 (20V/170W required)	1 (19V/90W required)	1 (20V/170W required)
Power on switch	1	1	1
Audio: comments	1 Combo jack for headset usage	1 Combo jack for headset usage	1 Combo jack for headset usage
DisplayPort	2 (up to 2560 x 1600), DP 1.4++	1 (up to 2560 x 1600)	2 (up to 2560 x 1600)
VGA	---	1 up to 1920x1200 @ 60Hz depending on FJ mobile client	---
HDMI text	1 x 2.0b	1	1 x 2.0b
Interface Notes	2x Type-A - 5V/0.9A, 4.5W 1x Type-A - 5V/2.4A, 12W 2x Type-C - 5V, 1.5A/4.5W charging port 1x Type-C - TBT4 up to 60 W (PD v2.0-1.1), 5-20V/3.0A upstream (PC), Intel AMT support (vPRO) 1x Type-C - TBT4 up to 15 W (PD v2.0-1.1), 5V/3.0A downstream, power output to client	3x Type-A - 5V/0.9A, 4.5W 1x Type-C - 15W 1x Type-C - Up to 60 W (PD v2.0-1.1) power output to client or 4.5W input	2x Type-A - 5V/0.9A, 4.5W 1x Type-A - 5V/2.4A, 12W 2x Type-C - 5V/1.5A, 4.5W charging port 1x Type-C - TBT3 up to 60 W (PD v2.0-1.1), 5-20V/3.0A upstream (PC) 1x Type-C - TBT3 up to 15 W (PD v2.0-1.1), 5V/3.0A downstream, power output to client
Kensington Lock support	1	no	1
Ethernet (RJ-45)	1	---	---
Notes	RJ-45:10/100/1000 MBits/s LAN WoL from S0 to S5 state depending on Fujitsu Mobile Client Intel AMT support (vPRO) PXE launching depending on Fujitsu Mobile Client User MAC address setting MAPT from 10th gen Downwards compatible to Thunderbolt3 and Type C (end device needs to have a Thunderbolt3 or Type C interface)	1 RJ45 (10/100/1000) WoL from S3 state WoL from S4 / S5 / G3 depending on Fujitsu mobile client Launch of PXE for dedicated FJ mobile clients Set the MAC address by the user MAPT from 9th gen	RJ-45:10/100/1000 MBits/s LAN WoL from S0 to S5 state depending on Fujitsu Mobile Client PXE launching depending on Fujitsu Mobile Client User MAC address setting MAPT from 9th gen Downwards compatible to Thunderbolt3 and Type C (end device needs to have a Thunderbolt3 or Type C interface)

Keyboard and pointing devices

	Backlight keyboard w/o touchstick
	Number of keyboard keys: 85, Keyboard pitch: 19 mm, Keyboard stroke: 1.5 mm
	Multi gesture touchpad with integrated mouse button functionality
	Touchscreen
	Tablet Pen (AES), stored in pen garage

Wireless technologies

Antennas	2x dual band for WLAN, 2x for LTE, Bluetooth shared with WLAN
Bluetooth	v5.1
Integrated WLAN	Intel WiFi 6 AX201 with integrated BT 5.1
WLAN encryption	WPA/WPA2/WPA3 (Wi-Fi Protected Access)
WLAN notes	Import and usage according to country-specific regulations.

Wireless technologies

Integrated LTE or UMTS	LTE Sierra Wireless EM7421 (Cat. 7) Fibocom L850-GL (Cat.9)
LTE/UMTS/GPS notes	Including GPS functionality Import and usage according to country-specific regulations. LTE Connection Manager (if configured with 4G/LTE)
GPS	Embedded in 4G module if configured with WWAN

Power supply

AC Adapter	20 V / 65 W (3.25 A), 100 V - 240 V, 50 Hz - 60 Hz, 3-pin (grounded) Type-C AC-Adapter	20 V / 65 W (3.25 A), 100 V - 240 V, 50 Hz - 60 Hz, 3-pin (grounded) Type-C AC-Adapter
AC Adapter	19 V / 65 W (3.42 A), 100 V - 240 V, 50 Hz - 60 Hz	19 V / 65 W (3.42 A), 100 V - 240 V, 50 Hz - 60 Hz
AC Adapter	20 V / 65 W (3.25 A), 100 V - 240 V, 50 Hz - 60 Hz, 3-pin (grounded) Type-C AC-Adapter	20 V / 65 W (3.25 A), 100 V - 240 V, 50 Hz - 60 Hz, 3-pin (grounded) Type-C AC-Adapter
AC adapter	19 V / 65 W (3.42 A)#20 V / 65 W (3.25 A) Type C	19 V / 65 W (3.42 A)#20 V / 65 W (3.25 A) Type C
Notes	65W AC Adapter for usage with system/ min. 90W AC Adapter for usage with Type C Port Replicator	65W AC Adapter for usage with system/ min. 90W AC Adapter for usage with Type C Port Replicator
Rated voltage range	100 V - 240 V (AC Input)	100 V - 240 V (AC Input)
Rated frequency range	50 Hz - 60 Hz	50 Hz - 60 Hz
1st battery options	Lithium polymer battery 4-cell, 50 Wh	Lithium polymer battery 4-cell, 50 Wh
1st battery	Lithium polymer battery 4-cell, 50 Wh	Lithium polymer battery 4-cell, 50 Wh
Battery features	Quick Charge: 80% in 1h	Quick Charge: 80% in 1h
Runtime 1st battery	11 h	11 h
Battery notes	Battery runtime information is based on worldwide acknowledged BAPCo® MobileMark® 2018. Refer to www.bapco.com for additional details. The BAPCo® MobileMark® Benchmark provides results that enable direct product comparisons between manufacturers. It does not guarantee any specific battery runtime which actually can be lower and may vary depending on product model, configuration, application and power management settings. The battery capacity decreases slightly with every re-charge and over its lifetime.	Battery runtime information is based on worldwide acknowledged BAPCo® MobileMark® 2018. Refer to www.bapco.com for additional details. The BAPCo® MobileMark® Benchmark provides results that enable direct product comparisons between manufacturers. It does not guarantee any specific battery runtime which actually can be lower and may vary depending on product model, configuration, application and power management settings. The battery capacity decreases slightly with every re-charge and over its lifetime.

Noise emission

Noise emission	Please refer to the Eco Declaration	Please refer to the Eco Declaration
----------------	-------------------------------------	-------------------------------------

Dimensions / Weight / Environmental

Dimensions (W x D x H)	309 x 214.8 x 16.9 mm 12.18 x 8.41 x 0.62 inch
Weight	1,015 kg
Weight (lbs)	2,23 lbs
Weight notes	Weight may vary depending on actual configuration
Operating ambient temperature	5 - 35 °C (41 - 95 °F); Packed -10 - 60 °C (14 - 140 °F)
Operating relative humidity	Running: 20 - 80% (relative humidity); Packed: 20 - 80% (relative humidity)

Compliance

Product	LIFEBOOK U9311X
Germany	GS
Global	TCO Certified 8.0 (depending on configuration) EPEAT® Silver (dedicated regions), depending on configuration
Compliance link	https://sp.ts.fujitsu.com/sites/certificates

Additional Software

Additional software (preinstalled)	Adobe® Reader® (pdf reader) CyberLink YouCam (webcam software) Fujitsu Display Manager Fujitsu DeskUpdate (driver and utility tool) ShockSensor Utility Power Saving Utility Fujitsu Plugfree Network (network management utility) EasyGuide online user documentation Microsoft Office (1 month trial for new Microsoft® Office 365 customers. Buy Microsoft Office.)
Additional software (optional)	Recovery DVD for Windows® Drivers & Utilities DVD (DUDVD) optional CyberLink PowerDVD BD (playback software for Blu-ray Disc™) CyberLink PowerDVD DVD (playback software for DVD) CyberLink YouCam (webcam software) Nero (backup and burning software)

Manageability

Manageability technology	DeskUpdate Driver management PXE 2.1 Boot code Wake up from S5 (off mode) WoL (Wake on LAN) Intel® vPro™ technology iAMT 14.0 (depending on processor)
Manageability software	DeskView Client DeskView Instant BIOS Management
DeskView components	Inventory Management BIOS Management Driver Management Security Management Alarm Management
Supported standards	WMI (Windows Management Instrumentation) PXE (Preboot Execution Environment) DMI (Desktop Management Interface) SMBIOS (System Management BIOS) WBEM (Web Based Enterprise Management) CIM (Common Information Model) BootP (made4you)
Manageability link	http://www.fujitsu.com/fts/manageability

Security

Physical Security	Kensington Lock support	Kensington Lock support
System and BIOS Security	Absolute Persistence® technology capable BIOS Optional: Trusted Platform Module (TPM 2.0) EraseDisk	Absolute Persistence® technology capable BIOS Optional: Trusted Platform Module (TPM 2.0) EraseDisk
User Security	Hard disk password User and supervisor BIOS password Embedded fingerprint sensor (optional) Embedded PalmSecure™ sensor (optional) Smartcard reader (integrated) AuthConductor Client Basic (secure authentication solution)	Hard disk password User and supervisor BIOS password Embedded fingerprint sensor (optional) Embedded PalmSecure™ sensor (optional) Smartcard reader (integrated) AuthConductor Client Basic (secure authentication solution)

Packaging information**Warranty**

Warranty period	2 years (for countries within EMEA)
Warranty type	Bring-in Service / Collect & Return Service (depending on country)
Warranty Terms & Conditions	http://www.fujitsu.com/warranty

Product Support Services - the perfect extension

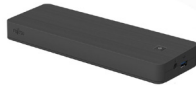
Recommended Service	9x5, Onsite Response Time: Next Business Day
---------------------	--

Warranty

Spare Parts availability	5 years after end of product life
Service Weblink	http://www.fujitsu.com/emeia/products/product-support-services/

Recommended Accessories

USB Type-C Port Replicator 2



Connect to your peripherals. Adapt to the task on demand. The universal USB Type-C connection helps you to get your peripheral devices connected easily. Enhance your USB connection options, connect your displays via HDMI, DisplayPort or VGA and charge your device without an additional charger.
Weight: 334 g, Dimensions: 219 x 75 x 22.9 mm (front) – 26.0 mm (back), including 90 W AC adapter and Type-C cable

Order Code:
S26391-F3327-L100

Thunderbolt™ 3 Port Replicator



One cable, many capabilities - Connect, save space, and keep your desk tidy. With Thunderbolt™ 3 you can connect almost everything with only one cable and in highspeed. Enhance your USB connection options, connect your displays via Thunderbolt™ 3, HDMI, DisplayPort and charge your device without an additional charger. Thunderbolt™ 3 allows you to connect even highspeed devices in a most convenient way.
Weight: 440 g, Dimensions: 239 x 80 x 26 mm, including 170 W AC adapter and TBT cable

Order Code:
S26391-F3357-L100

USB Type-C AC Adapter



Recharge your notebook or tablet at work, at home or on the road with this USB Type-C power source easily.

Order Code:
S26391-F3326-L502

AES Pen with replacement stylus tips



Take your creativity to the next level, with the most natural pen experience with the AES Pen with replacement stylus tips. With pen nibs that are very thin, you can experience the writing and signing behavior of an ink pen.

Order Code:
S26391-F3149-L500

Car Adapter USB-C-QC



One Car Adapter fits all. Independent of your mobile device charging method this car adapter will fulfill all major requirements and standards for fast charging vendorbrand-independent notebooks and all mobile devices. The Car Adapter USB-C-QC supports USB PD with PPS, Quick Charge (QC), Apple- and Samsung charge.

Order Code:
S26391-F2613-L630

More information

Fujitsu products, solutions & services

In addition to FUJITSU Tablet LIFEBOOK U9311X, Fujitsu provides a range of platform solutions. They combine reliable Fujitsu products with the best in services, know-how and worldwide partnerships.

Fujitsu Portfolio

Build on industry standards, Fujitsu offers a full portfolio of IT hardware and software products, services, solutions and cloud offering, ranging from clients to datacenter solutions and includes the broad stack of Business Solutions, as well as the full stack of Cloud offering. This allows customers to leverage from alternative sourcing and delivery models to increase their business agility and to improve their IT operation's reliability.

Computing Products

www.fujitsu.com/global/products/computing/

Software

www.fujitsu.com/software/

More information

Learn more about FUJITSU Tablet LIFEBOOK U9311X, please contact your Fujitsu sales representative or Fujitsu Business partner, or visit our website.
www.fujitsu.com/emeia/products/computing/pc/tablets

Fujitsu green policy innovation

Fujitsu Green Policy Innovation is our worldwide project for reducing burdens on the environment.

Using our global know-how, we aim to contribute to the creation of a sustainable environment for future generations through IT.

Please find further information at <http://www.fujitsu.com/global/about/environment>



**Green
Policy
Innovation**

Copyrights

All rights reserved, including intellectual property rights. Designations may be trademarks and/or copyrights of the respective owner, the use of which by third parties for their own purposes may infringe the rights of such owner. For further information see <http://www.fujitsu.com/emeia/resources/navigation/terms-of-use.html>

Copyright 2021 Fujitsu Technology Solutions GmbH

Disclaimer

Technical data is subject to modification and delivery subject to availability. Any liability that the data and illustrations are complete, actual or correct is excluded. Designations may be trademarks and/or copyrights of the respective owner, the use of which by third parties for their own purposes may infringe the rights of such owner.

Contact

Fujitsu Technology Solutions GmbH
Website: www.fujitsu.com
2021-08-12 EM-EN

All rights reserved, including intellectual property rights. Designations may be trademarks and/or copyrights of the respective owner, the use of which by third parties for their own purposes may infringe the rights of such owner. For further information see <http://www.fujitsu.com/emeia/resources/navigation/terms-of-use.html>
Copyright 2021 Fujitsu Technology Solutions GmbH