



HB8 Lite 4G + Solar Panel 5W

4G & Wi-Fi Smart Home Battery Camera Kit

Sun-powered security, wherever life takes you

By combining a powerful 5W weatherproof solar panel with EZVIZ's smart AOV Auto Mode, the HB8 Lite 4G Kit stays powered and alert all day. It smartly conserves energy while keeping an eye out for suspicious activity, giving you uninterrupted protection, minimal upkeep, and long-lasting outdoor security, perfect for remote locations or busy lifestyles.

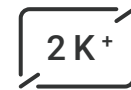


Key Features

HB8 Lite 4G



Dual Connectivity with 4G and Wi-Fi 6¹



2K+ Resolution



Always-On Video Mode 2.0



Rechargeable Lithium Battery



Works with EZVZ Solar Panels (Type-C versions) for Green Power



360° Panoramic View



AI-Powered Human / Vehicle Shape Detection



Smart Tracking



Color Night Vision



Balanced Image Exposure with Smart Lights



Two-Way Talk



Active Defense with Siren & Strobe Light



Weatherproof Design



Smart Integration with Google Assistant & Amazon Alexa²



Supports MicroSD Card (up to 512 GB) & EZVIZ CloudPlay Storage³

Solar Panel 5W



Eco-Friendly & Cost-Saving Solar Power Supply



High Light Absorption with Monocrystalline Silicon Cells



High Charging Efficiency (up to 5W)



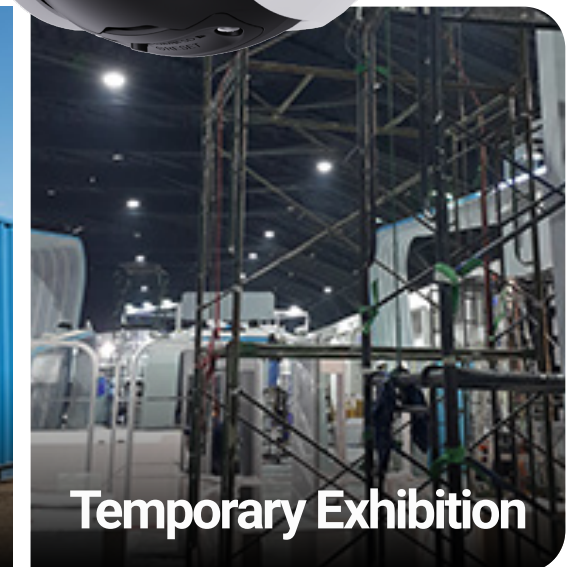
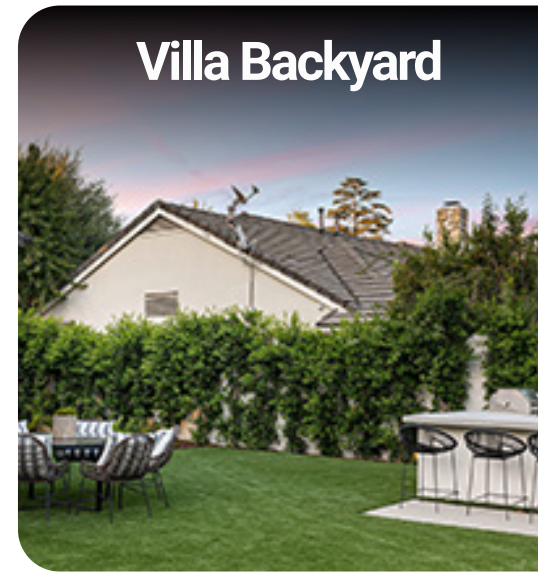
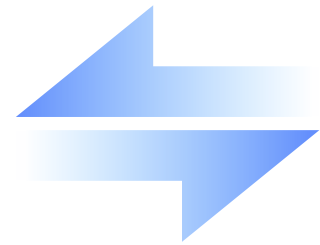
3-Meter Cable for Mounting Flexibility



Weatherproof Design

One camera that fits into every scenario

No matter where life takes you, this 4G camera has you covered. When Wi-Fi is spotty or goes offline, it automatically switches to 4G, so you're always connected with real-time alerts.



Nano SIM Card

Note: To use 4G connectivity, a compatible Nano SIM card and an active cellular data plan are required.

Time for battery-powered all-day recording

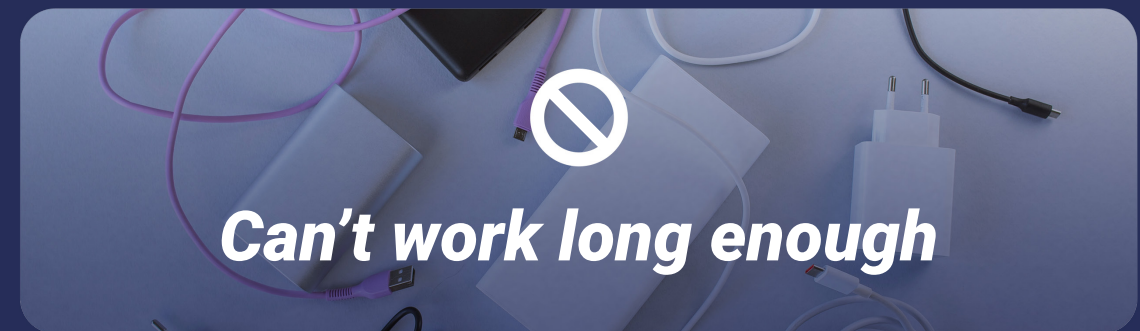
Unlike most battery cameras on the market, which have trouble detecting and recording videos due to short battery life and non-smart sensors, the camera is equipped with EZVIZ's groundbreaking AOV technology to enable all-day recording while ensuring a long standby time with a much greater detection distance.

[About the EZVIZ AOV Technology >](#)



VS

Most battery cameras in the market



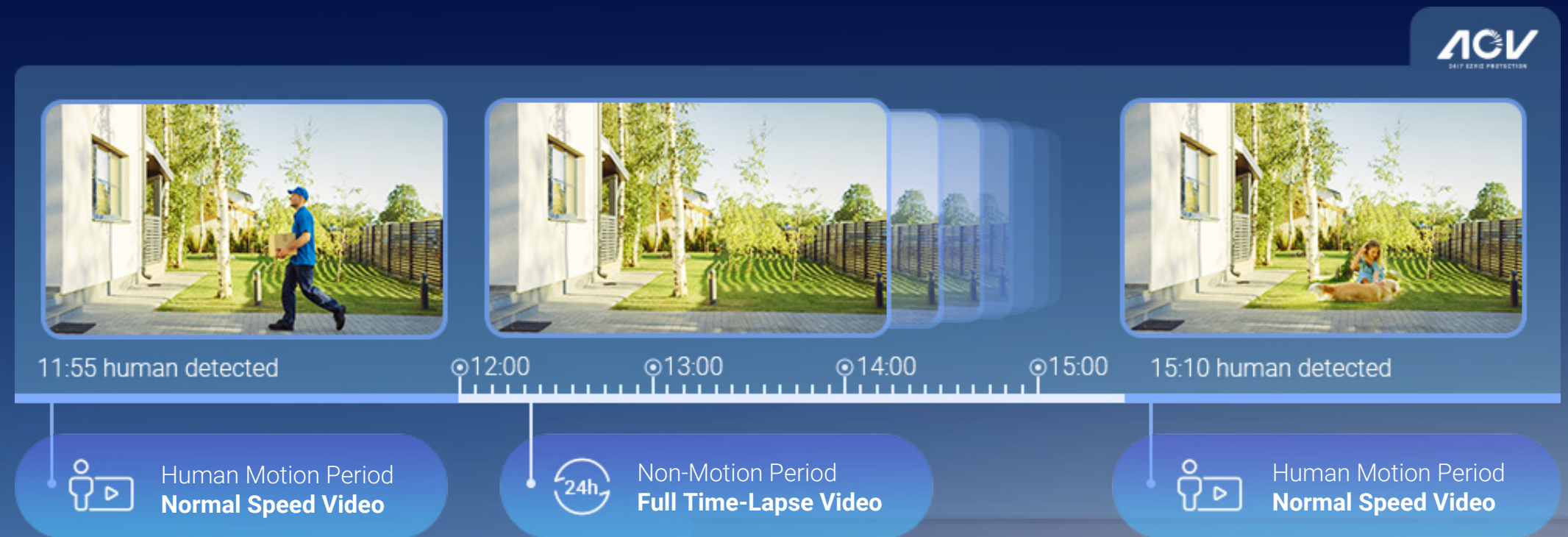
01 Always records, scenes or events

When on the AOV mode, the HB8 Lite 4G can capture images at preset time intervals and process them to create a smooth time-lapse video⁴ showing the changes over time, even when there is no activity. Once detecting an activity, the camera will switch to normal-speed videos to provide more information. You can now obtain all-day recording on a battery-powered camera without having to plug it into a power outlet.

Now upgraded to AOV 2.0

Wiser Battery Consumption for All-Day Recording

Down to 1-Second Ultra-Short Time Interval



02 Always protects, far or near

Unlike other battery cameras that heavily rely on PIR sensors to capture only nearby activities, this camera can detect an approaching person or vehicle at a much greater distance. If a person or vehicle appears, it will immediately notice that and inform you straight away.



12-25 meters⁵

9 meters

Solar-powered security that never takes a moment off

What you face now

Short battery runtime
which disrupts camera operation

Event-based recordings only
which misses important background

No continuous 24/7 recording
which is unable for full-time monitoring

What EZVIZ offers



Rechargeable Battery

Ensures worry-free event recording with a rechargeable battery



AOV Auto Mode

Optimizes time intervals to deliver up to 15 days⁶ of all-day recording on a single charge



5W IP65 Solar Panel

Runs year-round on 2 hours of sunlight a day and built to handle diverse outdoor uses⁷

360-degree vision that is crisp and clear

Forget about installing multiple cameras to secure different directions – a single HB8 Lite 4G can pan and tilt smoothly to capture an unrestricted 360-degree view. Its sharp 2K+ resolution lets you see fine details at different angles that matter to you.

2K+



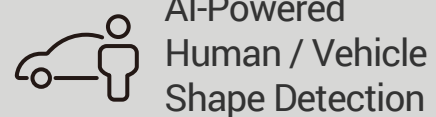
340°
Horizontal Rotation

80°
Vertical Rotation



Smarter vision, better detection

The HB8 Lite 4G is smart enough to distinguish moving people and vehicles from other objects. You no longer need to constantly watch your camera or go through long video files to find a crucial moment – set up the detection preferences and let the camera inform you when it's important.



AI-Powered
Human / Vehicle
Shape Detection



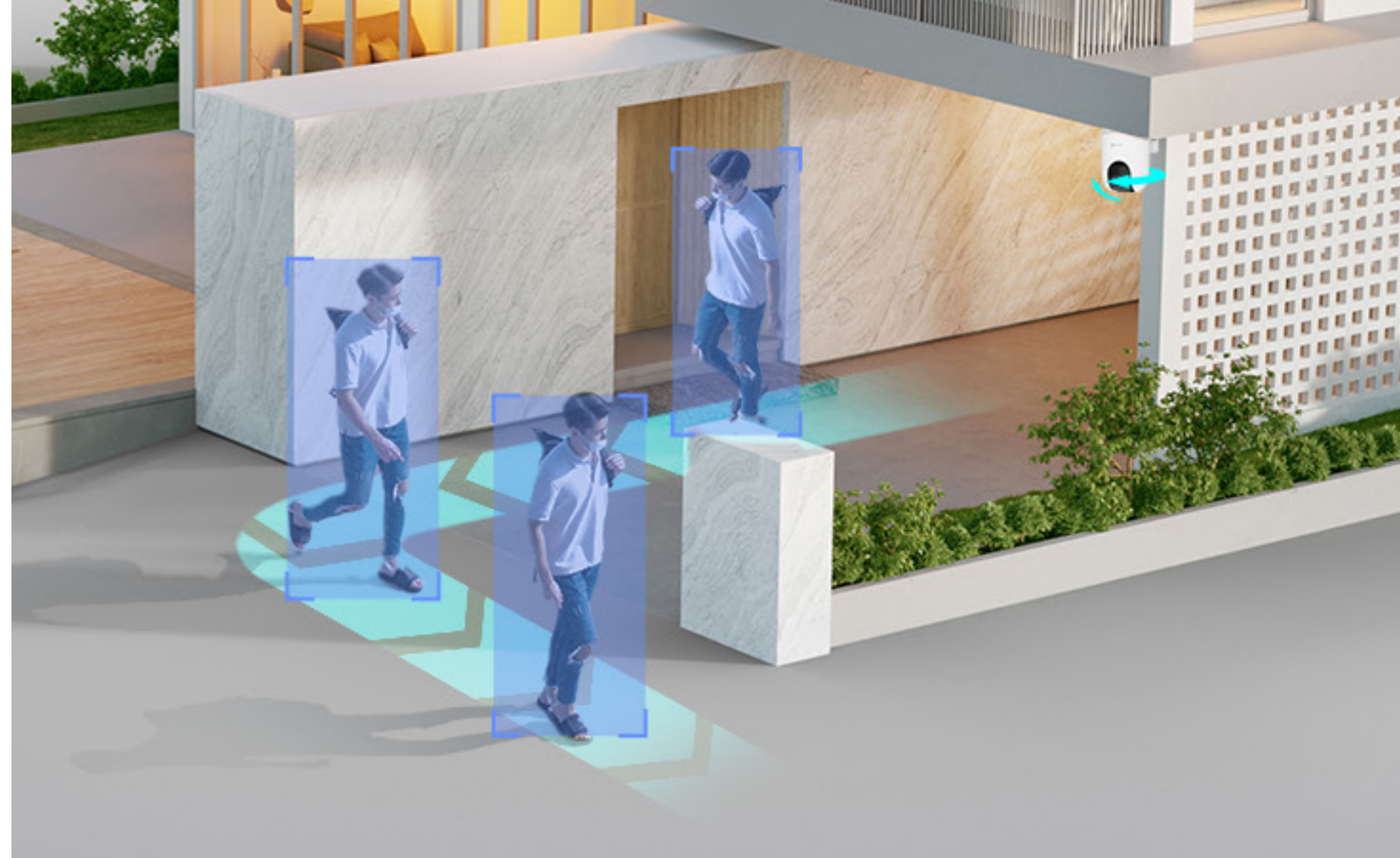
Customizable
Detection Zone



No Subscription
Fee

Record an unfolding activity with auto smart tracking

Unlike a fixed-angle camera, which can easily lose sight of a moving person in its limited field of view, the HB8 Lite 4G is able to change its sight to keep a close eye on an ongoing activity. As soon as a person enters the detecting zone, the HB8 Lite 4G is activated to lock on the person, rotating to follow the entire movement.



Night is now bright and colorful

Blurred and pixelated night vision is now a thing of the past. Thanks to its built-in spotlights, the HB8 Lite 4G delivers vivid and crisp visuals even in the dimmest environments. You can choose between two night vision modes as you'd like.



2 Spotlights | Full-Color Night Vision



2 IR Lights | Black & White Night Vision

Smart adaptation for even and clear images

Wherever you install the HB8 Lite 4G camera, it manages to comprehend the surrounding light to automatically create an evenly exposed, clear image, even in the dark. Users can choose to enable the "Balanced Image Exposure" option via the EZVIZ App at any time, regardless of which night vision mode the camera is in.

For open area



With adaptative smart light



Without adaptative smart light

For edges & corners



With adaptative smart light

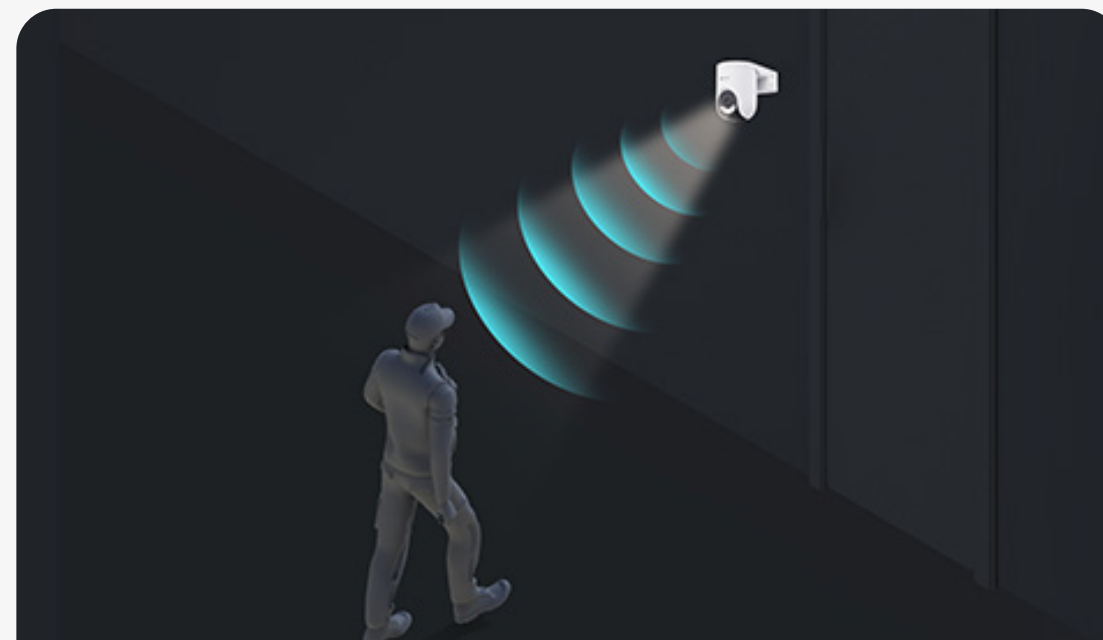


Without adaptative smart light



Respond with high-quality audio

Easily respond to any visitor by simply using your phone to speak remotely. The camera can also auto-play a recorded voice message when a motion is detected.



Use active defense to deter

Upon detection of intruders, the camera will set off a loud siren and flash two dazzling spotlights to let the uninvited strangers know they have been detected.



Deliver protection, rain or shine

With a robust weatherproof design, the kit ensures continuous operation, making it your reliable partner in all weather scenarios.



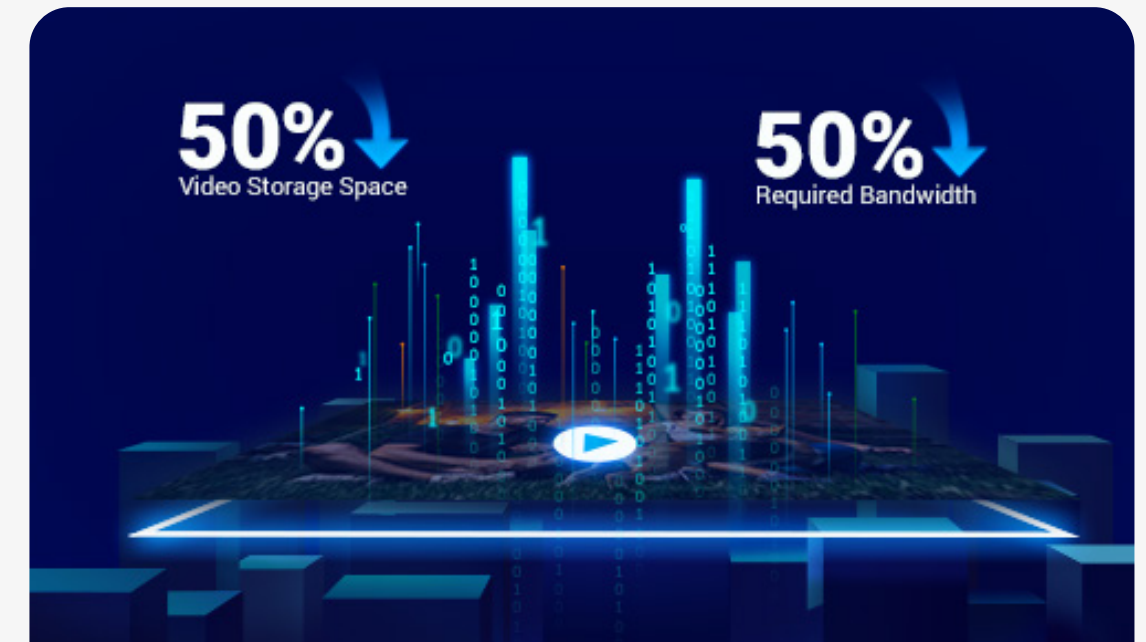
Save your videos with two options

Safely store important moments or cute memories on a large local storage card, or by subscribing to the EZVIZ CloudPlay.³



Control with your voice, hands-free

The camera can integrate with your existing voice assistants. You can pull up the video feed by simply saying "Alexa" or "Hey Google".²



Enhance video experience with H.265

The H.265 creates a smoother viewing experience while only using about 50% of the data storage space required by cameras with H.264.⁸

A cleaner planet, with an EZVIZ Green product

At EZVIZ, we design products with sustainability in mind, building a smart home that's ready for the future and responsible for the planet. By integrating the use of solar technology and planting forests, we enable you to live a smart lifestyle with less carbon emissions.

[Learn more >](#)



Reduces carbon emissions generated by a multi-device smart home



Initiative of the Year



Grows the EZVIZ Global Forest Plan with locally beneficial tree species

We're committed to protecting with trust

We put security as the primary goal of every product and system that we build, and assiduously improve our practices to better protect your device, data and privacy.

[Learn more about our security practices >](#)



**End-to-end
Data Encryption**

AES

Data Encryption

TLS

Data Transmission
Encryption

Our global certifications in the fields of **information security, privacy information security, and cloud security**



- 1 Please note that a supported Nano SIM card and a cellular data plan are needed to enable the 4G connectivity.
- 2 Amazon Alexa and Google Assistant are not available in certain languages and countries.
- 3 The local storage card must be purchased separately. The cloud storage service is only available in certain markets. Please verify the availability before making a purchase.
- 4 To use this function, a compatible microSD card (sold separately) must be inserted into the camera.
- 5 When the AOV mode is enabled, according to EZVIZ Lab's test results under standard conditions, the camera is able to detect movements at a distance of up to 25 meters during the day, and up to 12 meters during the nighttime. Other tested battery models that use PIR-based detection usually have a detection distance of up to 9 meters. The actual detection range may differ due to environmental factors.
- 6 Data comes from EZVIZ Lab's test under standard conditions and may vary due to environmental factors and the frequency of camera activities.
- 7 Data from EZVIZ Lab's test results, under the following standard condition: AM=1.5 , 25°C, 1000W/m², SMQ. The data is obtained based on the camera set on AOV mode and with the AOV interval set as AUTO. The actual charging efficiency may vary depending on sunlight intensity and other environmental factors, while the actual hours of camera use may also differ due to the frequency of camera activities and other environmental factors.
- 8 Data from EZVIZ Lab's test results under standard conditions. The video compression efficiency will vary with the frequency and complexity of the activity captured, and other environmental factors.

Specifications

CS-HB8c-R100-1N4WL4GA

Camera

Image Sensor	1/3" 4-Megapixel Progressive Scan CMOS Sensor
Minimum Illumination	0.01 Lux @(F1.2, AGC ON), 0 Lux with IR
Shutter Speed	Self-adaptive shutter
Lens	4 mm @ F1.6 Diagonal angle: 90° Horizontal angle: 75° Vertical angle:40°
PT Angle	Pan: 340°, Tilt: 80°
Day & Night	IR-cut filter with auto switch
DNR	3D DNR
Night Vision	15 m

Video & Audio

Max Resolution	2K+ (2560 × 1440)
Frame Rate	15 fps. Self-adaptive during network transmission
Video Compression	H.265 / H.264
Video Bit Rate	Ultra-HD; Full HD; Hi-Def. Adaptive bit rate.
Audio Bit Rate	Self-adaptive
Max. Bitrate	4 Mbps

Network

Wi-Fi Standard	IEEE802.11b, 802.11g, 802.11n, 802.11ax
Frequency Range	2.4 GHz ~ 2.4835 GHz
Channel Bandwidth	Supports 20 MHz
Security	64/128-bit WEP, WPA/WPA2, WPA-PSK/WPA2-PSK
Transmission Rate	11b: 11Mbps, 11g :54Mbps, 11n :72Mbps, 11ax:114Mbps
Wi-Fi Pairing	AP pairing
Protocol	EZVIZ Cloud Proprietary Protocol
Interface Protocol	EZVIZ Cloud Proprietary Protocol
Minimum Network Requirement	4 Mbps
Frequency Bands	IN LTE-FDD: B1/B3/B5/B8 IN LTE-TDD: B34/B38/B39/B40/B41 EU LTE-FDD: B1/B3/B5/B7/B8/B20/B28 EU LTE-TDD: B38/B40/B41 LA LTE-FDD: B2/B3/B4/B5/B7/B8/B28/B66 LA LTE-TDD: B38/B40/B41

Function

Smart Alarm	AI-powered human shape detection AI-powered vehicle shape detection
Two-Way Talk	Supports
General Function	Anti-Flicker, Heart Beat, Password Protection, Watermark

Specifications

CS-HB8c-R100-1N4WL4GA

Storage

Local Storage	Supports microSD card (max. 512 GB)
Cloud Storage	Supports EZVIZ CloudPlay storage (Subscription required)

General

Operating Conditions	-20 °C to 50 °C (-4 °F to 122 °F), Humidity 95% or less (non-condensing)
IP Grade	IP65
Power Supply	DC 5 V / 2 A (Adapter needs to be purchased separately)
Battery Capacity	5,200 mAh
Power Consumption	Max.10 W
Product Dimensions	168 × 100 × 137.2 mm (6.61 × 3.94 × 5.40 inch)
Packaging Dimensions	205 × 145 × 194 mm (8.07 × 5.71 × 7.64 inch)
Product Weight	660 g (23.28 oz)
Weight with Package	1120 g (39.50 oz)

Specifications

CS-PSP5-R100-3M

Performance Parameter

Power Voltage	5.7 V
Power Current	877 mA
Open Circuit Voltage	6.9 V
Short Circuit Current	0.92 A
Max. Power	5 W
Interface	Type-C
Solar Cell Efficiency	≥ 23.5%
Operating Conditions	-20°C ~ 60°C (-4°F ~ 140°F) Humidity 90% or less (non-condensing)
IP Grade	IP65

Mechanical Data

Solar Cell Type	Monocrystalline solar cells
Power Cable Length	3 meters
Product Dimensions	210 × 154 × 33 mm (8.27 × 6.06 × 1.30 inch)
Packaging Dimensions	225 × 175 × 70 mm (8.86 × 6.89 × 2.76 inch)
Weight	Net Weigh: 286 g (10.09 oz) with package: 656 g (23.14 oz)

In the box

- HB8 Lite 4G Camera
- Solar Panel 5W
- Drilling Template
- Adjustable Mounting Bracket
- Screw Kit × 2
- Power Cable
- Regulatory Information × 3
- Quick Start Guide × 2

Certifications

CE / REACH / WEEE / RoHS

Specifications are subject to change without notice. "🌈", "EZVIZ" and other trademarks and logos are the properties of EZVIZ in various jurisdictions.