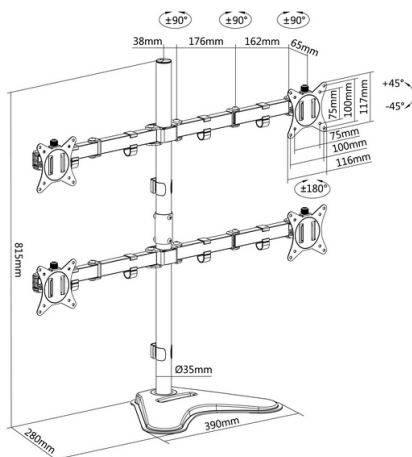
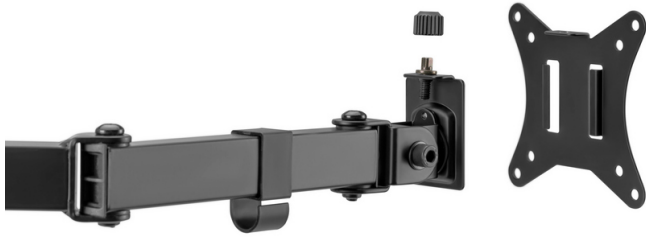


650127 17"-32" Articulating Quad Monitor Tabletop Stand

Product Images





Short Description

1. Max. Load Capacity: 9Kg (per screen)
2. Max. VESA: 100x100
3. Screen Rotation: 360°
4. Freely adjusting height for an optimal ergonomic position
5. Free-tilting design for multiple monitor viewing angles
6. Slide-in VESA plate provides easy access for attachment and detachment
7. Portrait or Landscape Viewing: one solution fits any installation
8. Cable clips keep cables organized and protected

Description

The equip® 650127 Monitor Desk Stand is a compact but sturdy product that ensures a reliable installation of your LCD/LED monitor.

Flexible design for ample adjustment and viewing angles, adjustable for either portrait or landscape orientation. The freestanding base provides stability and support on any work surface. A convenient phone slot located on the base. A detachable VESA plate for user-friendly installation.

Follow the graphic guide included in the package, you can install your monitor on your own with ease.

Additional Information

Color	Black
EAN	4015867228241
Model Number	650127
Compatible Display Size	17"-32", 17"-32"
VESA support	75 x 75, 100 x 100
Approval and Compliance	RoHS
Compatible display size	17"-32"
Package Contents	650127 Manual screws kits
Product weight (kg)	6.4
Dimensions (W x D x H)	869 x 280 x 815 mm
Material	Metal, Plastic
Load Capacity (kg)	9
Mount	Desk mount
Pan (Swivel) range	+90°~-90°
Screens support quantity	4
Tilt range	+45°~-45°
VESA compatibility	75x75, 100x100
Installation	Freestanding
Cable management	Yes
Support Curved TV (Monitors)	Yes
Quick Installation VESA Plate	Yes

