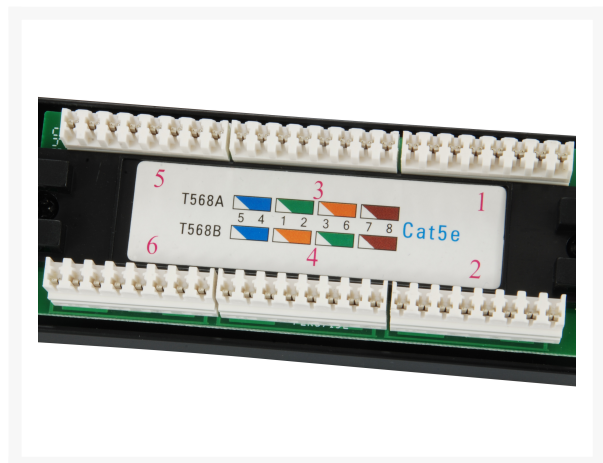
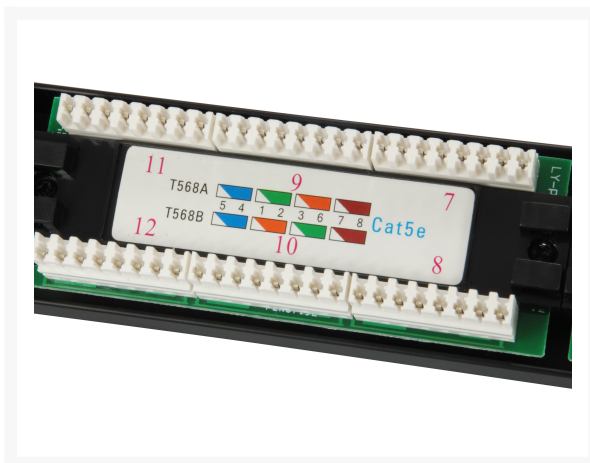
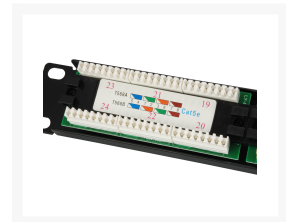
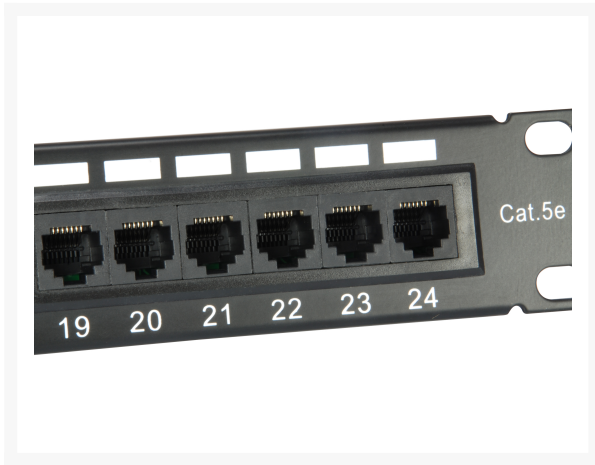


235325 24-Port Cat.5e Unshielded Patch Panel, Black

Product Images





Short Description

- 19", 1U
- 24 Ports x Cat.5e RJ45
- Unshielded
- Class D, up to 100MHz, 10/100Base-T, 1GBase-T
- Compliant with ANSI/TIA/EIA 568 standard
- IDC T568A/T568B Color Coded
- Dual IDC (LSA and 110) compatible
- Material: Strudy Steel
- Color: Black (RAL 9005)

Description

The equip® Patch Panel is a 19" 1U network distribution unit integrating cable management system for better routing and strain relief requirements, suitable for both LSA and 110 standards. Featuring 24 x RJ45 ports, this patch panel is recommended to connect with equip® patch cords and cabling accessories to achieve outstanding performance. Moreover, each port is marked with port number for recognition

Additional Information

Harmonized System (HS) code.	851779
Customs product code (TARIC).	8517790000
Shielded.	No
Approval and Compliance.	RoHS
Package Contents.	235325
Color.	Black
Model Number.	235325
Dimensions (W x D x H).	482.6 x 32.8 x 44.4 mm
Product weight (kg).	0,59
Category.	Cat.5e
Material.	Metal
Mount.	19" rack mount
Null panel.	No

