

DELL ULTRASHARP
34 CURVED USB-C
HUB MONITOR

U3423WE

Beauty in the way you work



**THE WORLD'S # 1
MONITOR COMPANY***

DELLTechnologies

* Dell monitors are #1 Worldwide for 8 years (2014 to 2021)! Source: IDC Worldwide Quarterly PC Monitor Tracker, Q1 2022

ULTRASHARP MONITOR

DELL ULTRASHARP 34 CURVED USB-C HUB MONITOR – U3423WE

Beauty in the way you work

Experience immersive productivity with superior contrast and color on a 34" curved WQHD monitor with IPS Black technology and ComfortView Plus¹.



All-encompassing experience

Immerse in a curved 34" WQHD (3440 x 1440) screen that features IPS Black technology with 2,000:1 contrast ratio plus improved black and gray performance. See vibrant colors across a wide viewing angle with a color depth of 1.07 billion colors and wide color coverage of 98% DCI-P3 color space. Enhance eye comfort with always-on built-in ComfortView Plus¹ that reduces low blue light emission without compromising color.

Productivity Hub

Streamline any workplace with this USB-C Hub monitor that connects you to the Ethernet and a host of other devices. Stretch productivity and multitask efficiently across 2 connected PCs with KVM, Auto KVM, Picture-by-Picture and Picture-in-Picture.

Skillfully crafted

Designed with a premium finish, this monitor with built-in speakers is a great fit for your work environment. Reduce cable clutter with a built-in cable management system. Easy-to-use with full adjustability, you can be work the way you want and be comfortable all day. Built with sustainable practices for the performance you need while meeting EPEAT[®] Gold, ENERGY STAR[®] and TCO Certified Edge Displays criteria.

¹ TÜV Rheinland certified – Low Blue Light Hardware Solution and Flicker Free (ID 1111254236). For more details, visit www.tuv.com.

ULTRASHARP MONITOR

DELL ULTRASHARP 34 CURVED USB-C HUB MONITOR – U3423WE

Immerse in outstanding clarity

Improve field of view on an ultra wide 34" curved screen with WQHD (3440 x 1440) resolution.

True color

See 1.07 billion colors across a wide spectrum with 98% DCI-P3 and 100% sRGB color coverage.

Exceptional contrast

Get superior black and gray performance with a contrast ratio of 2,000:1 with IPS Black technology.

Jumpstart productivity

Power sync feature seamlessly starts your monitor and connected Dell PC¹ with a press of a button.

Productivity hub Monitor that comes with **USB-C** (up to 90W power delivery), **RJ45** (wired Ethernet) with RJ45 lock feature, super speed **USB 10Gbps**, and quick access front ports.

Premium design

3-sided narrow bezel with a platinum silver finish for a polished look that complements the home and office.

ENERGY STAR[®]
TCO Certified Edge,
EPEAT[®] Gold registered.

Connect 2 PC sources and multitask efficiently with **Picture-by-Picture/ Picture-in-Picture** and **KVM** (with **Auto KVM**).

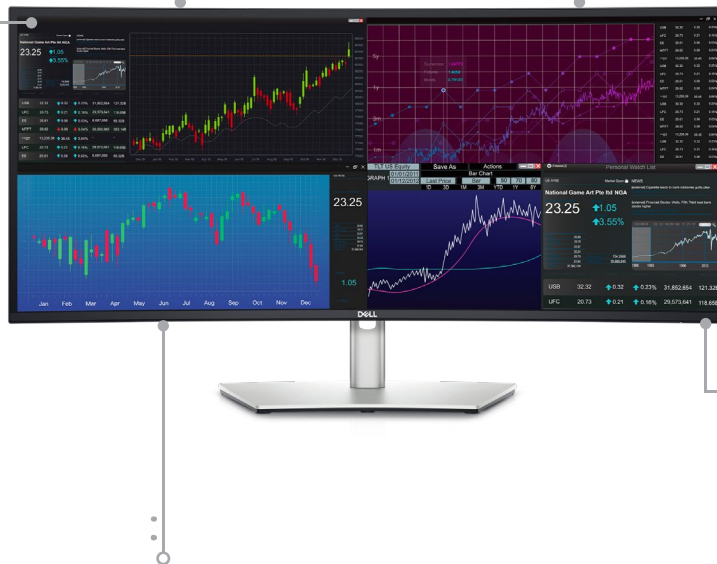
Optimize eye comfort with built-in **ComfortView Plus²** that reduces harmful blue light emissions without sacrificing color performance.

Adjust to your comfort

Tilt, swivel and height adjustable (150mm max).

Easy-to-use joystick control

To navigate through the On-Screen Display (OSD) menu.



[Click here to explore the Dell UltraSharp 34 Curved USB-C Hub Monitor – U3423WE](#)

1 Compatible with select Dell PCs

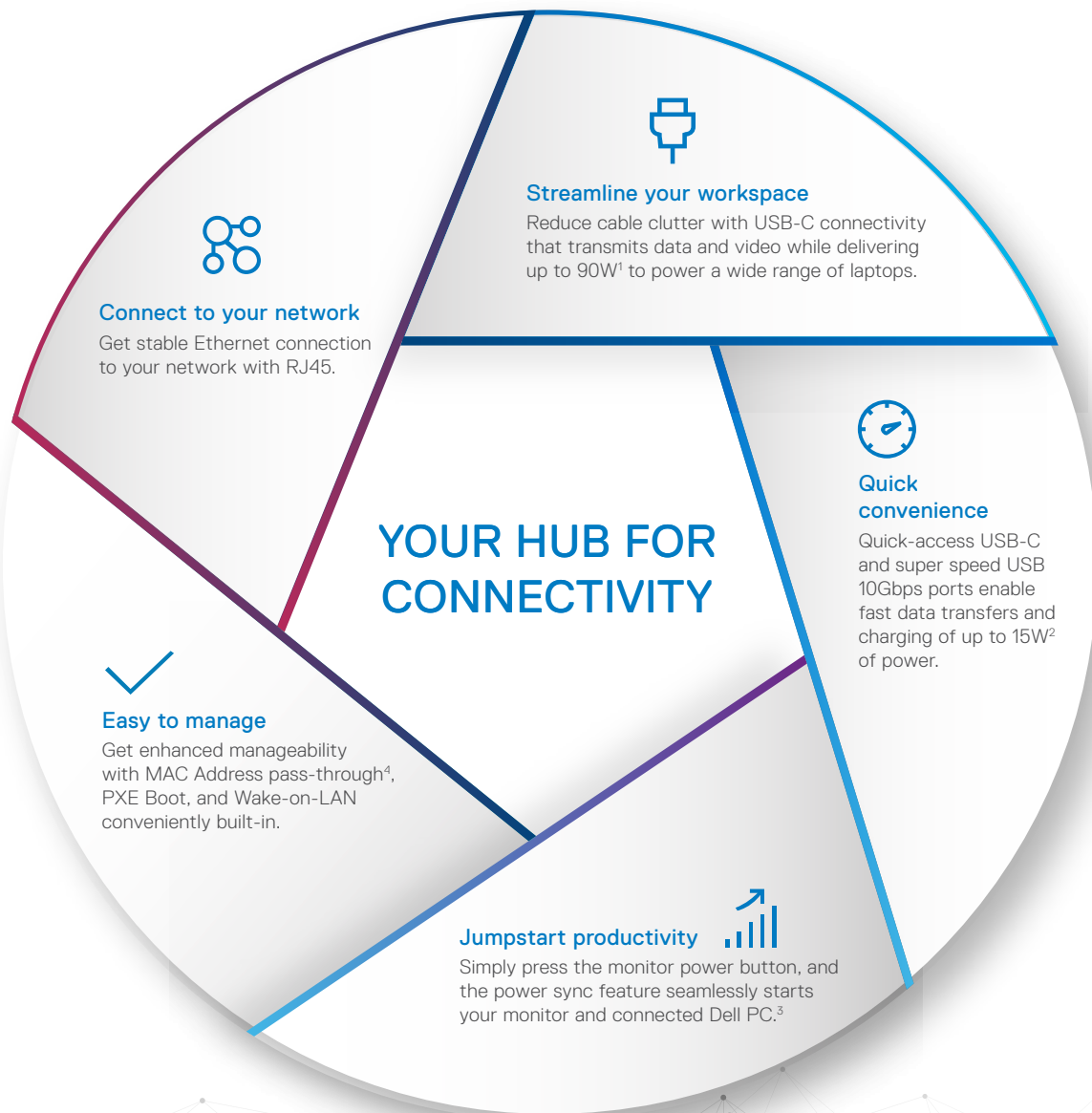
2 TÜV Rheinland certified – Low Blue Light Hardware Solution and Flicker Free (ID 1111254236). For more details, visit www.tuv.com.

ULTRASHARP MONITOR

DELL ULTRASHARP 34 CURVED USB-C HUB MONITOR – U3423WE

Connectivity that drives productivity

USB-C Hub monitors offer extensive connectivity options including USB-C (up to 90W power delivery), RJ45 for wired Ethernet access, super speed USB for fast data transfers, and more.



¹ Dell adheres to standard USB-C specifications and protocol. Functionality with non-Dell USB-C systems may vary.

² Via quick access USB-C port.

³ The power sync feature on this Dell USB-C Monitor enables start up and wake-on-demand on compatible Dell PCs. Please check your Dell PC to ensure support of this feature.

⁴ MAC Address pass-through functionality is tested to work with most Dell PC systems. Functionality on non-Dell systems may vary.

ULTRASHARP MONITOR

DELL ULTRASHARP 34 CURVED USB-C HUB MONITOR – U3423WE

Work on content from two connected
PCs for multitasking efficiency

Productivity unlocked

- Connect two PC sources and the Auto KVM feature seamlessly switches controls over to the second connected PC.
- Use KVM (keyboard, video, and mouse) to control both PCs with a single keyboard and mouse.
- View content from both PCs at the same time with Picture-by-Picture (PBP) and Picture-in-Picture (PIP).
- Get uninterrupted connection with RJ45 lock feature that locks the wired Ethernet to a chosen PC while continuing to work from dual PC inputs.

Picture-in-Picture (PIP)

Work on applications from one PC and view content in an inset window from another PC.

Picture-by-Picture (PBP)

View content from two different PC sources side-by-side on the screen, similar to a dual monitor setup.



ULTRASHARP MONITOR

DELL ULTRASHARP 34 CURVED USB-C HUB MONITOR – U3423WE

A step forward in design

Crafted with a premium platinum silver finish, this stylish Dell UltraSharp monitor shines in both home and office environments.



Designed with purpose

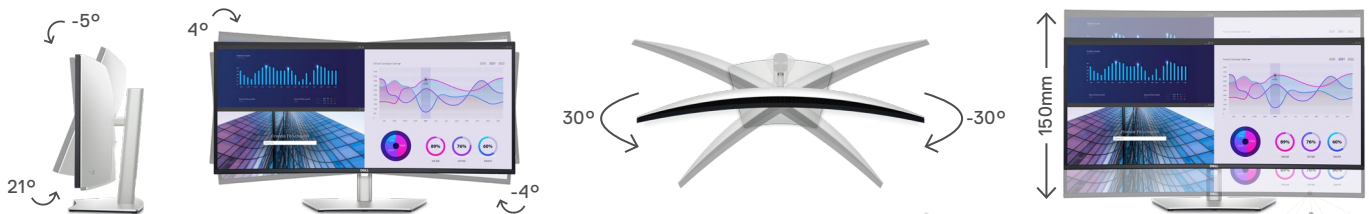
The small base and elegant cable management system hide cords within the monitor riser.

Easy-to-use joystick control

Navigate the on-screen menu and adjust settings with the easy-to-use joystick control.

Adjust to your comfort

Experience made-for-you comfort by tilting, slanting, swiveling, and adjusting the height of your monitor (150mm max).



ULTRASHARP MONITOR

DELL ULTRASHARP 34 CURVED USB-C HUB MONITOR – U3423WE

Modern Intuitive User Interface

New modern user interface for ease of use and personalization of features with Menu launcher.

Productive at every level

Easy Arrange allows you to easily tile multiple applications across one or more screens with 46 pre-set window partitions and the ability to personalize up to five windows, giving you improved multitasking abilities.

Stay updated

Get automatic notification anytime for new updates on monitor firmware¹ and software.

Optimize front of screen experience

Get uniform color experience from your monitor seamlessly by matching the color preset of the monitor¹ and the supported ICC profile.

Easy setup and sharing of accessories

Setup a single keyboard and mouse to be shared easily between multiple PCs with USB KVM wizard¹. Quick access menu or hotkey allow convenient fast switching between PCs.

Easy deployment

DDM is compatible with management tools such as SCCM, InTune and Command Line Interface scripts for easy IT integration and deployment with asset management.

Learn more about [Dell Display Manager](#).



¹ Select models only.



RECOMMENDED ACCESSORIES



Dell UltraSharp 4K Webcam | WB7022

Experience best image quality in its class with the world's most intelligent 4K webcam.¹



Dell Premier Wireless ANC Headset | WL7022

Collaborate with ease anywhere with this Teams certified wireless headset which offers active noise cancellation and smart sensors that automatically mute and unmute your call.



Dell Premier Multi-Device Wireless Keyboard and Mouse | KM7321W

Multitask seamlessly across three devices with this premium full-sized keyboard and sculpted mouse combo with programmable shortcuts and 36-month battery life.²

¹ Based on an independent user study of 20 experienced webcam users commissioned by Dell. Participants evaluated the brightness, color saturation and sharpness of live web meeting video streamed with the Dell UltraSharp webcam and leading competitive external 4K personal conferencing webcams in uniform, low and high contrast lighting conditions (No physical webcams nor brands were shown to participants) (June 2021).

² Based on Dell analysis of battery life usage model calculations, Nov. 2020. Results vary depending on use, operating conditions and other factors.

ULTRASHARP MONITOR

DELL ULTRASHARP 34 CURVED USB-C HUB MONITOR – U3423WE

Sustainability on Dell Monitors



Environmental standards

This monitor uses 85% PCR (Post-consumer Recyclable) plastic in the design¹, 90% recycled aluminum and meets the latest environmental standards, such as ENERGY STAR® and TCO Certified Edge and is registered EPEAT® Gold².

Eco-conscious packaging

Designed with the environment in mind, Dell commercial monitors come in 100% recyclable cardboard packaging.³

Energy conservation

Save energy when your monitor is not in use with PowerNap⁴, a feature that dims or puts your monitor to sleep when it's not in use.

1 By weight of the total weight of plastic parts in product. Excludes printed circuit boards, labels, cables, connectors, electronic components, optical components, ESD components, EMI components adhesives, and coatings.
2 EPEAT registered where applicable. EPEAT registration varies by country. See www.epeat.net for registration status by country.
3 The outer box/corrugate cushion packaging and recycled fibers in Dell commercial monitor packaging (excluding D-series) are made from corrugate and virgin cardboard material. Excludes foam cushioning and plastic bags.
4 Enabled by Dell Display Manager

ULTRASHARP MONITOR

DELL ULTRASHARP 34 CURVED USB-C HUB MONITOR – U3423WE

DELL ULTRASHARP 34 CURVED USB-C HUB MONITOR – U3423WE TECHNICAL SPECIFICATION

DIAGONAL VIEWING SIZE	86.72 cm 34.14 inches
PRESET DISPLAY AREA (H X V)	800.05 mm x 335.05 mm 31.50" x 13.19"
MAXIMUM PRESET RESOLUTION	3440 x 1440 @ 60Hz
PANEL TYPE	IPS Black Technology
DISPLAY SCREEN COATING	Anti-glare treatment of the front polarizer (3H) hard coating
VIEWING ANGLE	178° vertical / 178° horizontal
PIXEL PITCH	0.2325 mm x 0.2325 mm
PIXEL PER INCH (PPI)	109
CONTRAST RATIO	2000 to 1 (typical)
ASPECT RATIO	21:9
BACKLIGHT TECHNOLOGY	White LED Edgelight System
BRIGHTNESS	300 cd/m ² (typical)
COLOR GAMUT	98% sRGB, DCI-P3 98%, Display P3 98%, REC 709 100% (Delta E < 2), 1.07 billion colors
RESPONSE TIME	5 ms gray to gray in Fast mode 8 ms gray to gray in Normal mode
HDR READY	No
CONNECTIVITY	<ul style="list-style-type: none">· 1 x DisplayPort version 1.4 (HDCP2.2)· 2 x HDMI port version 2.1 (TMDS) (HDCP2.2)¹· 1 x USB Type-C upstream port (video and data) (Alternate mode with DisplayPort 1.4, Power Delivery PD up to 90W)· 1 x USB-C upstream port (data only, 10Gbps USB 3.2 Gen2)· 4 x super speed USB 10Gbps (USB 3.2 Gen2) Type-A downstream port· 1 x super speed USB 10Gbps (USB 3.2 Gen2) Type-C downstream port with charging capability at 15 W (maximum)· 1 x super speed USB 10Gbps (USB 3.2 Gen2) Type-A with BC1.2 charging capability at 2 A (maximum)· 1 x Audio line-out port· 1 x RJ45 port
ADJUSTABILITY	Height adjustable (150 mm) Tilt (-5° to 21°) Swivel (-30° to 30°) Slant Adjust (-4° to 4°) Pivot (NA)
PBP / PIP	PbP (Yes) PiP (Yes)
KEYBOARD, VIDEO AND MOUSE (KVM)	Yes, KVM and Auto KVM
DAISY CHAIN AVAILABILITY	No
AUDIO OUTPUT	1 x Audio line-out ²
BUILT-IN SPEAKER	Yes - 2 x 5W
DELL DISPLAY MANAGER COMPATIBILITY	Yes, Easy Arrange, Other key features
SPECIFICATIONS - SERVICE / SUPPORT DETAILS	3-Year Advanced Exchange Service and Premium Panel Exchange
HEIGHT WITH STAND (COMPRESSED ~ EXTENDED)	392.77 mm – 542.77 mm (15.46" ~ 21.37")
WIDTH WITH STAND	813.26 mm (32.02")
DEPTH WITH STAND	237.44 mm (9.35")
HEIGHT WITHOUT STAND	359.05 mm (14.14")
WIDTH WITHOUT STAND	813.26 mm (32.02")

1 Not supporting the HDMI 2.1 optional specification, including HDMI Ethernet Channel (HEC), Audio Return Channel (ARC), standard for 3D format and resolutions, standard for 4K digital cinema resolution, HDR, Fixed Rate Link (FRL), Enhanced audio return channel (eARC), Variable Refresh Rate (VRR), Quick Media Switching (QMS), Quick Frame Transport (QFT), Auto Low Latency Mode (ALLM), Display Stream Compression (DSC), and Source-Based Tone Mapping (SBTM).

2 Connect Speakers. Headphone use is not supported for the audio line out connector.

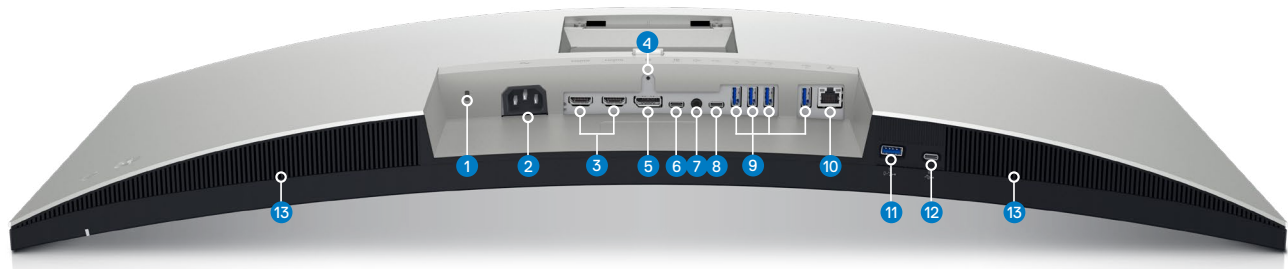
ULTRASHARP MONITOR

DELL ULTRASHARP 34 CURVED USB-C HUB MONITOR – U3423WE

DELL ULTRASHARP 34 CURVED USB-C HUB MONITOR – U3423WE TECHNICAL SPECIFICATION

DEPTH WITHOUT STAND	57.50 mm (2.36")
WEIGHT (PANEL ONLY - FOR VESA MOUNT)	7.72 kg (17.01 lb)
WEIGHT (WITH STAND ASSEMBLY AND CABLES)	11.44 kg (25.21 lb)
WEIGHT (WITH PACKAGING)	15.65 kg (34.49 lb)
SECURITY	Security lock slot (cable lock sold separately) Anti-theft stand lock slot (to lock stand to monitor using screw)
COMPLIANT STANDARDS	<ul style="list-style-type: none">ENERGY STAR® Certified MonitorEPEAT® Gold registered where applicableRoHS CompliantTCO Certified & TCO Certified EdgeBFR/PVC Free (Halogen-free) (excluding external cables)Arsenic-Free glass and Mercury-Free for the panel only
FLAT PANEL MOUNT INTERFACE	VESA mounting holes (100 mm x 100 mm - behind attached VESA Cover)
TEMPERATURE RANGE	Operating: 0°C to 40°C (32°F to 104°F) Non-operating: -20°C to 60°C (-4°F to 140°F)
HUMIDITY RANGE	Operating: 10% to 80% (non-condensing) Non-Operating: 5% to 90% (non-condensing) - Storage and Shipping
ALTITUDE	Operating: 5000 m (16404 ft) max Non-Operating: 12192 m (40000 ft) max
VOLTAGE REQUIRED	100 VAC to 240 VAC / 50 Hz or 60 Hz + 3 Hz / 3.0 A (max)
POWER CONSUMPTION NORMAL OPERATION	0.3 W (Off Mode) 0.3 W (Standby Mode) 31 W (On Mode) 198 W (Max)
WHAT'S INCLUDED	Monitor, Stand Riser, Stand Base 1 x Power cable 1 x Type-C Gen 2 (C-C cable) - 1 m 1 x DP Cable (DP to DP) - 1.8 m 1 x (Type-A to Type-C) Gen 2 cable - 1 m 1 x HDMI cable (HDMI-HDMI) - 1.8 m Quick setup guide Safety, Environmental and Regulatory Information

PORTS AND SLOTS



- 1 Security lock slot (based on Kensington Security Slot™)
- 2 Power connector
- 3 HDMI port (2)
- 4 Stand lock feature
- 5 DisplayPort
- 6 Type-C upstream port (video and data) Super speed USB 10Gbps (USB 3.2 Gen2)
- 7 Audio line-out port¹
- 8 Type-C upstream port (data only) Super speed USB 10Gbps (USB 3.2 Gen2)
- 9 Type-A downstream port (4) Super speed USB 10Gbps (USB 3.2 Gen2)
- 10 RJ45 port
- 11 Type-A downstream port with Power Charging. Super speed USB 10Gbps (USB 3.2 Gen2)
- 12 Type-C downstream port. Super speed USB 10Gbps (USB 3.2 Gen2)
- 13 Speakers

1 Connect Speakers. Headphone use is not supported for the audio line out connector.

ULTRASHARP MONITOR

DELL ULTRASHARP 34 CURVED USB-C HUB MONITOR – U3423WE

Steadfast reliability

As the No. 1 monitor company worldwide*, we take pride in our unyielding commitment to quality and the utmost in customer satisfaction.



Peace of mind

Dell Premium Panel Exchange¹ allows a free monitor replacement during the Limited Hardware Warranty² period, even if only one bright pixel is found.

Minimize downtime

Your monitor comes with a 3-year Advanced Exchange Service³ so that if a replacement becomes necessary, it will be shipped to you the next business day during your 3-year Limited Hardware Warranty.²

Get a higher level of support

Upgrade to 24x7 specialized technical phone support with the Dell ProSupport option.⁴

DELLTechnologies

* Dell monitors are #1 Worldwide for 8 years (2014 to 2021)! Source: IDC Worldwide Quarterly PC Monitor Tracker, Q1 2022

1 Applicable to Dell UltraSharp, P Series, and C Series desktop monitors.

2 For copy of Ltd Hardware Warranty, write to Dell USA LP, Attn: Warranties, One Dell Way, Round Rock, TX 78682 or see <https://www.dell.com/warranty>.

3 Advanced Exchange: Dell will send you a replacement monitor the next business day in most cases if deemed necessary after phone/online diagnosis. Shipping times may vary by location and for monitors 55" and above. Fee charged for failure to return defective unit. See [dell.com/servicecontracts/global](https://www.dell.com/servicecontracts/global).

4 Availability varies, please visit www.dell.com/support for details. In some countries, hours for in-region support may vary. Support after local business hours may be provided in a language other than the local language.

Technical specifications subject to change without prior notice. Product availability varies by country. Please contact your Dell representative for more information.

© 2022 Dell Inc. or its subsidiaries. All rights reserved. Dell Technologies, Dell, EMC, Dell EMC and other trademarks are trademarks of Dell Inc. or its subsidiaries. USB Type-C® and USB-C® are registered trademarks of USB Implementers Forum.

