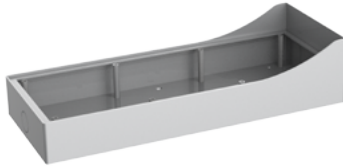


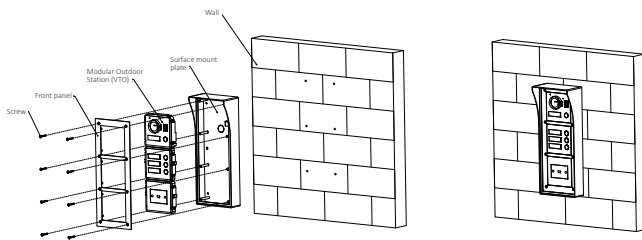
VTOB114-V2

3 Module Accessories Surface mounted box



- Material: AL5052 t=2.0mm
- Dimensions: 369.4mm×145.4mm×43mm (14.51"×5.72"×1.69")

Installation



- Step 1** Drill holes according to hole positions of the mounting box, and put expansion pipe in place.
- Step 2** Fix the mounting box onto the wall with ST4×25 screws.
- Step 3** Fix the rear panel on the mounting box with M2×8 screws.
- Step 3** Connect cables.
- Step 4** Fix modules on the rear panel with M3×8 screws.
- Step 5** Apply glue to gaps between the mounting box and the wall.
- Step 6** Write room number or the username on the visiting card, and insert it into user directory.

Dimensions (mm[inch])

